

FREE

# Mountain Monthly

**FEBRUARY 2025**

2025 a  
Year of Change

**WATER WISDOM**  
with dams and bores



KINGLAKE CRICKET CLUB

# TRASH & TREASURE MARKET

Find household goods, books, crafts, sports equipment and more at affordable prices. Come along, who knows, you might find a hidden treasure.



 **SUNDAY 30 MARCH, 2025**

 **9 AM - 2PM**

**\$ 20  
STALL FEE**

TO BOOK A STALL:  
<https://www.trybooking.com/CYJSF>



have questions? email:  
[nmca.kinglake@gmail.com](mailto:nmca.kinglake@gmail.com)



# Mountain Monthly

**PUBLISHED BY**

Mountain Monthly Co-operative Ltd,  
a not-for-profit community organisation

**POSTAL ADDRESS**

PO Box 109, Kinglake 3763

**WEBSITE**

www.mountainmonthly.com.au

**EMAIL**

mmkinglake@bigpond.com

**EDITOR**

Jane O'Connor  
0407 318 648 • editormm@bigpond.com

**ADVERTISING**

Neesha Sinclair  
0493 740 926 • advertisingmm@bigpond.com

**PRODUCTION/GRAPHIC DESIGN**

Ann Friedel Publishing

**ACCOUNTS**

Nadia Chevriaut  
0447 175 240 • mountainmonthlybilling@gmail.com

**DISTRIBUTION**

Sean O'Connor

**MM BOARD OF DIRECTORS**

Chair: Rob Verhagen  
Treasurer: Lisa Roberts  
Board members: Dr Angela Palmer

**MM PRINTED BY**

Prominent Press Pty Ltd

**MM DISTRIBUTION**

1500 copies to Kinglake, Kinglake Central, Pheasant Creek, Kinglake West, Flowerdale, Glenburn, Castella, Toolangi, Smiths Gully, St. Andrews, Hurstbridge, Yarra Glen, Healesville, Yea, Alexandra and Whittlesea.

**ADVERTISING RATES 2025**

**Black and White Rates Space Design**

1/16	(45mm w X 65mm h)	\$39.00	\$12.00
1/8	(90mm w X 60mm h)	\$67.00	\$17.00
1/4	(90mm w X 130mm h)	\$129.00	\$23.00
1/3	(188mm w X 85mm h)	\$145.00	\$26.00
1/2	(188mm w X 130mm h)	\$200.00	\$32.00
Full Page	(188mm w X 275mm h)	\$350.00	\$47.00

**Please supply completed artwork as CMYK high resolution PDF or jpg.**

**Full Colour Rates Space Design**

1/16	45mm w X 65mm h)	\$59.00	\$19.00
1/8	(90mm w X 60mm h)	\$99.00	\$24.00
1/4	(90mm w X 130mm h)	\$190.00	\$28.00
1/3	(188mm w X 85mm h)	\$237.00	\$33.00
1/2	188mm w X 130mm h)	\$278.00	\$38.00
Full Page	188mm w X 275mm h)	\$557.00	\$64.00
Half Page Inside Front or Back Cover		\$320.00	\$38.00
Inside Front or Back Cover		\$654.00	\$64.00
Back Cover		\$747.00	\$64.00

**Supplied artwork to be emailed at correct size and supplied as 300dpi CMYK High Resolution PDF, no crop marks.**

**Line Classified** – \$12.00 prepaid \$15.00 account

**Changes to existing ads** – \$15.00. (1-2 changes only)

**Position surcharge:** 30% for page 5 and 20% for page 7.

**Late fee past deadline:** 5% of total account.

**Advertising packages** available in 3, 6 or 12 month blocks.

**MARCH 2025 ISSUE DEADLINE**

**15 FEBRUARY 2025**

FOR BOTH ADS AND ARTICLES

*Please no late copy*



FOLLOW US ON FACEBOOK



**DISCLAIMER:**

The views expressed in Letters to the Editor and news articles are not necessarily those of the Editor unless expressly indicated and signed. All advertising copy is the responsibility of the advertiser, not the Editor.

**PHOTOGRAPHY:**

All photographs submitted become the property of MM and their future usage is at the Editor's discretion.

Mountain Monthly Co-operative Ltd. All rights reserved. No reproduction, copy or transmission of this publication may be made without written permission. No paragraph or any artistic work of this publication may be reproduced, copied or transmitted without written permission, or in accordance with the provisions of the Copyright Act 1968 (Cth) (as amended). Any person who does any unauthorised act in relation to this publication may be liable to civil claims for damages or an account of profits, together with injunctive relief.

## MM SUBSCRIPTION

Are you finding it difficult to get your copy of MM before they have run out? You can become a subscriber and have your copy posted each month for only \$59 per year. Just fill in this subscription slip and send it with your cheque to

**Mountain Monthly, PO Box 109 Kinglake 3763**, or deposit directly into Mountain Monthly account

**BSB 633 000 Account Number 138 539 010** with your surname as the reference.

Name.....

Postal Address .....

..... Postcode .....

Phone.....

Email.....

Method of payment  
Please tick

Direct Deposit

Cheque

# Meet Your New Operations Coordinator at Kinglake Ranges Neighbourhood House

**Building a Stronger, More Connected Kinglake Ranges Together**

**H**ello, Kinglake community! I'm Hendrika, and I'm thrilled to be stepping into the role of Operations Coordinator at the Kinglake Ranges Neighbourhood House.

Having lived here for two years, I've come to appreciate the beauty of our region, as well as the incredible resilience and spirit that defines our community. With over 25 years in the not-for-profit sector, I am passionate about supporting communities like ours to grow, connect, and thrive.

I was part of the wider Salvation Army team who assisted and helped the bushfire-affected communities, and I've seen first-hand the incredible resilient community spirit here in Kinglake.

As your new Operations Coordinator, I'm committed to ensuring that the Neighbourhood House is a vibrant, welcoming space for all. Together, we'll build stronger connections, expand the services we offer, and continue to make this space a hub for support, learning, and growth. I believe that by working together we can create meaningful change and make sure everyone in Kinglake feels supported, valued, and connected.

## **New Programs & Opportunities**

Starting in February, we're



launching new programs designed to connect, support, and empower our community. Here's a sneak peek of what's coming up:

- Pop-Up Café/Coffee Catch-Up: Join us every Monday morning for a welcoming coffee catch-up! Whether you're taking a break after school drop-off or just want to unwind, it's the perfect chance to relax and meet new people.
- New 'Office Hub': We're excited to offer 3 hot desks and administrative support for anyone who needs a workspace away from home. Our friendly staff is here to assist with computer use, bill payments, or government reporting, in case you struggle

with technology.

- Community Haircuts: We're bringing back community haircuts! Stop by for a quick trim, courtesy of our wonderful volunteers.
- Learn Local Digital Training Courses: We're launching new digital training courses designed to boost your digital skills. The first program will cover MS Word, MS Outlook and Email, Windows, Internet research, and online safety. You will have a master CV/ résumé and cover letter that can be tweaked for any new job application. Plus, we'll share top interview tips and tricks to ace that next job interview. This is a funded ACFE course, and it is only \$60

for those who are eligible (17 years and older).

## **Let us know what you want!**

If there's a program or course you'd love to see, or if you have suggestions for different times, we want to hear from you. Your support is what makes it possible for us to keep offering a variety of high-quality programs.

## **Volunteer Opportunities**

Volunteers play a vital role in making our programs successful. Whether you can spare a few hours a week or share a special skill, we welcome your involvement in areas like:

- Event coordination
- Program facilitation
- Gardening
- Administrative support
- Opp Shop assistance
- Serving on our Committee of Management

Volunteering is a rewarding way to connect with others, gain new skills, and make a real impact in our community. Plus, we'd be happy to provide references for your next job application.

## **Get Involved Today!**

You can reach me directly at 0487 232 303 or via email at [krnh@kinglakeranges.com.au](mailto:krnh@kinglakeranges.com.au). We also host regular community events, so stop by and say hello.

Looking forward to meeting you all soon. Warm regards

*Hendrika Jooste,  
Operations Coordinator,  
Kinglake Ranges  
Neighbourhood House*

## IN THIS ISSUE

### COVER PHOTO:

*A beautiful farm dam. See Page 28 for the right advice on installing one. Photo: WikimediaCommons*

5. Dangerous landfill fire
6. What's on
6. Letter to the Editor
6. Don't Kick Up The Dust
7. New Council Gets To Work
7. Empowering Communities Program Begins
8. Flood recovery continues
9. Large drop in apprenticeships
10. Council Family Day Care service

10. A Cool Coding Club For Kids at Kinglake Library
10. New Provider for Flowerdale Kindergarten
11. Finance Report
11. Winter Art Expo
12. Property Report
13. Kinglake CWA
14. Kinglake Neighbour House
15. Kinglake Rotary

16. Inner Wheel Club of Kinglake
16. Lions Club of Kinglake
18. Our Heritage
21. Health & Wellbeing
23. Church Notices
24. Discovering Our Fungi
24. Environment Matters
25. Kinglake Landcare
26. In The Garden With Alex
28. Water Wisdon

30. School Reports
32. Sport
35. Plan For Emergencies
35. Watch for heating hay
36. Emergency Services
38. Business & Trades Guide
44. Local Business Directory
45. Community & Emergency Contact Numbers
46. Murrindindi Shire West Map



# Dangerous landfill fire prompts another warning on battery disposal

**Several times last year, MM published warnings from Murrindindi Shire Council urging residents to properly dispose of used batteries.**

Mayor, Damien Gallagher, has now reissued the warnings after a dangerous fire occurred at the Alexandra Landfill - believed to have been caused by a lithium battery in household rubbish - during a time of high fire danger.

The fire broke out in January, when a garbage load began emitting smoke, setting fire to surrounding waste at the landfill site.

Landfill staff had to work quickly to isolate and control the burning material using on-site machinery to separate burning waste, before CFA emergency services arrived to fully extinguish the fire.

Councillor Gallagher says the fire is a serious reminder that batteries must be disposed of safely across the shire.

“This fire started during a very hot weekend, just one day before a Total Fire Ban was declared for Murrindindi Shire, and it could have had serious consequences”, he said.

Batteries of any kind must not be placed in garbage or recycling bins. Even small household batteries can cause fires in bins, in garbage and recycling collection trucks, and at landfill sites.

“If this battery had caused a fire in the

collection truck, the driver may have been forced to empty the load on the side of the road, creating a very hazardous situation during an extremely hot, dry and windy day”.

Cr Gallagher said that while attending the landfill, he witnessed the avoidable and potentially toxic conditions that council staff, CFA volunteers, and the community were exposed to.

Council regularly promotes safe and free battery disposal, encouraging residents to store unused batteries in a container and

drop them off at the following locations:

- Alexandra Resource Recovery Centre
- Eildon Resource Recovery Centre
- Yea Resource Recovery Centre
- Marysville Resource Recovery Centre
- Kinglake Resource Recovery Centre
- Alexandra FoodWorks
- Yea FoodWorks
- Eildon FoodWorks
- Marysville Grocer

For more information, visit [murrindindi.vic.gov.au/batteries](http://murrindindi.vic.gov.au/batteries) or call (03) 5772 0333.



<b>8</b> Chainsaw operation course Flowerdale	<b>13</b> Code Club starts Kinglake Library	<b>15</b> Mountain Monthly Deadline	<b>18</b> All Things Business Kinglake	<b>18</b> The Big Conversation, Kinglake	<b>23</b> Kinglake Market	<b>20-27</b> Netball Trials
---	---	--	--	--	------------------------------	--------------------------------

## Don't Kick Up The Dust

**I**t doesn't take much hot, dry weather to see the dust stirring up on the shire's gravel roads.

There are 720 kilometres of unsealed roads across Murrindindi, according to the shire, and those who live and farm on them would appreciate some thought from motorists.

They are also often used by pedestrians (including children) and horse riders.

When visiting or exploring our beautiful area, the shire is asking you to be mindful of the dust your vehicle creates. Dust can cause significant issues for farmers, residents, and other road users.

Drive slowly to reduce dust and think about the consequences of driving quickly, especially during the dry months.



## WHAT'S ON KINGLAKE LIBRARY



### FEBRUARY 2025

**10**  
MONDAY

**Rainbow Vibes**  
4.30 to 6.00 pm  
Join us for animal crochet organised with our LGBTQIA+ community and allies.

**13**  
THURSDAY & FRIDAY

**Coding Club**  
10 sessions: every Thursday & Friday 3.45 pm - 4.45 pm. Runs from 13/2 - 14/3  
Get started learning and playing with coding. Have fun creating your own game. Registration is essential

**24**  
MONDAY

**Pageturners**  
5.00 to 6.20 pm  
No prior reading required - come along and talk books, audiobooks & film with a light supper provided.

MONDAYS

**High school drop-in**  
4.00 to 6.00 pm  
Snacks and free Wi-Fi.

**Digital Literacy**  
11.00 am to 12 noon  
Supported self-paced learning.

TUESDAYS

**Storytime**  
10.30 am  
Stories, songs and friends for 0-2 years during school terms.

WEDNESDAYS

**Boomerang Bags**  
10.00 am to 2.00 pm  
All ages and skills welcome. Sewing machines provided.

FRIDAYS

**Storytime**  
10.30 am  
Stories, songs and craft for 3-5 years during school terms.

**Craft Group**  
2.00 to 4.00 pm  
Bring what you are working on or interested in and share ideas with the group.

**Creative Bytes**

**Foundation Murrindindi**

**For bookings**  
Book online at [murrindindi.vic.gov.au/libraries](http://murrindindi.vic.gov.au/libraries) or call us on 5772 0333.



## Letter to the Editor

**C**ommunity events like the lighting of Kinglake's Christmas Tree can't happen without multiple sponsors, businesses, groups and like minded individuals working together.

Our biggest THANK YOU

To our SPONSORS who helped fund the Christmas Tree and catering:

Bendigo Bank, Murrindindi Shire Council, Integrity Real Estate, Foundation Murrindindi, Kinglake Post Office, R & D Burns Engineering, Foodworks Kinglake, Mountain Monthly, Simply Timber – Simon Sutton, Oldfields Stockfeeds, Cindy McLeish MP, You shared our vision and helped it become a reality.

To the members of the COMMUNITY GROUPS who shared the spirit:

Kinglake Lions, Kinglake CFA, Kinglake SES - Kinglake CERT- Kinglake Ranges Neighbourhood House - Kinglake Library – Kinglake Reserve Trust (Ellimatta) - Kinglake Ladies Social Club.

And the students and teachers of our local schools - Kinglake Primary School – Middle Kinglake Primary school – Kinglake West Primary School – Strathewen Primary School – Kinglake Community Kindergarten.

Thanks for their incredible creativity and support through artworks, choir and decorating assistance of the Lions Park.

To the individual volunteers who created and erected all the decorations to enhance Kinglake, erected the tree, safety fence and more, prepared and cooked the BBQ and salads, and so many more activities behind the scene to make it all happen – you are hidden gems who sparkle when help is needed.

This is truly a combined community success!  
THANK YOU ALL!

*The Kinglake CWA team*

To advertise in the  
**Mountain Monthly phone**  
**Neesha 0493 740 926**  
**Deadline for March is**  
**February 15**

# New Council Gets To Work

**F**ollowing the local government elections late last year, Murrindindi Shire has appointed a Mayor and appointed councillors to portfolios.

At a Special Meeting of Council, Cr Damien Gallagher was elected Mayor and Cr Anita Carr was elected Deputy Mayor for the first year of the new Council term.

This is Cr Gallagher's second term as Mayor and he promised to work with the community and create a plan to reach our goals for the future of Murrindindi Shire.

"Our attention now turns to engaging with our community and together, creating a Council Plan that will guide us over the next four years and help us achieve our community's vision for the future of this special place.

"The Council Plan will be delivered by capable Council officers, and my commitment is to support Council leadership to foster a culture of respect, impact, and high performance", he said.

Cr Gallagher said he would advocate for opportunities for our commercial, agricultural, and industrial employers; continue to advocate for our community's equitable access to recurrent, untied grant funding; work with colleagues across the state to ensure that local government is recognised as a valuable partner providing vital services and amenities.

Council also resolved to establish the following portfolios and Councillor appointments:

- Integrity, Finance and Resilience – Cr Paul Hildebrand
- Citizens Services and Communication – Cr Anita Carr
- Community Wellbeing – Cr Jodi Adams
- Economic Development – Cr Sandice McAulay
- Infrastructure and Road Care – Cr Eric Lording
- Sustainability and Assets – Cr Sue Carpenter



Council's Portfolio system is in place to enable Councillors to focus and provide input on specific areas of Council.

Representatives were also appointed to Council committees as well as external committees and organisations for the next 12 months. For more information on the appointments please refer to the Council Meeting minutes on the website at [murrindindi.vic.gov.au/councilmeetings](http://murrindindi.vic.gov.au/councilmeetings)

## Empowering Communities Program Begins

**M**urrindindi Shire Council has launched its Community Capacity Building Program, designed to help businesses, volunteers, and community members in developing skills and becoming more sustainable.

This initiative offers an opportunity for personal and professional development while contributing to the growth and resilience of our community.

The Program includes tailored training, mentoring, and networking events aimed at equipping participants with practical skills and knowledge. By strengthening the capacity of individuals and organisations, the Program seeks to build on the foundations of our connected and resilient community.

Council invites individuals and organisations from across the Shire to get involved. "This is your opportunity to be part of something that not only



helps you grow skills and knowledge but also contributes to the broader community's success and sustainability", the council said.

If you or your organisation is interested in knowing more and can benefit from the Program, please contact Council's

Community Capacity Building Officer Bill Bate on (03) 5772 0333 or visit [murrindindi.vic.gov.au/capacity-building](http://murrindindi.vic.gov.au/capacity-building) to register your interest.

This project is funded by the Department of Energy, Environment and Climate Action (DEECA) Community Development Fund.

Mayor, Damien Gallagher, said the shire was fortunate to have a diverse and dedicated range of community groups and volunteers who already contributed so much. Council's Community Capacity Building Program is designed to support and enhance these efforts, providing local groups and individuals with tools to grow, innovate and thrive.

Participants can attend training sessions on grant writing, unleash their leadership potential, craft winning business plans, master social media marketing, and benefit from mentoring programs for small businesses, Cr Gallagher said.



# Flood recovery continues

**Six declared natural disaster events have occurred in the Murrindindi Shire over the last 2 years and the cost to repair the damage is high.**

The shire suffered from floods in 2022, 2023 and 2024 and the damage to roads and infrastructure has run into the 10s of millions.

The council is still seeking state and federal funds to restore community assets.

From the October 2022 floods, which damaged \$30 million of Council assets, to the January 2024 floods, which caused a further \$10 million asset damage, recovery across the Shire has been laborious and costly.

“This does not include the unquantifiable amount of damage to private property, livestock and the environment”, the shire said.

Over these events, Council has continued to focus on community safety, asset longevity and pursuing all potential opportunities for the reinstatement of our infrastructure.

Currently, the council has completed \$2.8 million worth of asset repairs, including on 11.2 km of Council roads. These costs exclude relief and recovery activities, the protection of public and personal assets, and debris and waste removal. All expenditure claims for 2022, 2023 and 2024 declared flood events, totaling over \$3.2 million, have been submitted to the DTP with an estimated \$24 million of works planned to be delivered over the next two years.

“This has required significant planning and collaboration with external agencies and adherence to complex funding processes. Due to the magnitude of damage, Council requires funding from the Department of Transport and Planning’s (DTP) Disaster Recovery Funding Arrangements (DRFA), which provide funding to reinstate assets to their prior condition.

“If we are unable to meet strict conditions, we are unable to be reimbursed for the cost of repairs. The timelines for repair work are determined by funding agency approval”.

As climate impacts are becoming more significant for our community, Council continues to advocate for additional support from state and federal governments to improve our infrastructure and rebuild damaged assets to contemporary standards, rather than replacing what was there.

Mayor Cr Damien Gallagher said the council understood that the community was affected by damaged assets, and was pushing for more government funding to improve them.

“By seeking extra support now, we hope to prevent expensive and repeated repairs from future severe weather events exacerbated by climate change. Your patience and support are important to us as we navigate the aftermath of these significant flood events”.

For more information on flood recovery works, visit [murrindindi.vic.gov.au/floodrepairworks](http://murrindindi.vic.gov.au/floodrepairworks) or get updates straight to your inbox by signing up to our Flood Recovery Newsletter at [murrindindi.vic.gov.au/recoverynewsletter](http://murrindindi.vic.gov.au/recoverynewsletter)



# Large drop in apprenticeships and trainee positions

**T**here has been a 38% decline in apprenticeship and traineeship commencements in a four month period across 2024/25, compared to the same period in 2023/24.

The Victorian Chamber of Commerce and Industry says the drop is most pronounced in carpentry and plumbing, but there has also been a significant fall in commercial cookery, retail, hospitality, hairdressing and engineering fabrication.

The chamber's Chief Executive, Paul Guerra, said "The decline of apprenticeship starters from last year to now, is significant and a massive concern".

"The skilled workforce crisis is here, and it must be addressed. The 38% year on year reduction is more than worrying, as apprenticeships are crucial to ensure our workforce meets our growth needs".

He said there could be no doubt that one of the key factors in the decline was the reduction in employer incentives.

With many employers paying above-award wages, nearly 40% of

Victorian Chamber members reported that incentives of \$12,000 or more would be required to encourage them to hire more apprentices.

The Victorian Chamber is proposing a two-tiered incentive scheme that includes:

- For small businesses: Incentives of \$15,000 per apprentice, structured over the apprenticeship period to include an initial lump sum of 35% of the incentive at commencement, followed by 25 per cent at the end of the first year, 25 per cent at completion, with progress payments of five per cent annually in years two to four.
- For medium-sized businesses: Incentives of \$10,000-\$12,000 per apprentice, similarly structured.
- For large businesses: Targeted project-specific funding to support apprenticeships within their supply chains, reinforcing the critical role large employers play in mentoring and supporting apprentices.

**EAT-IN or TAKE-AWAY ~ LICENCED**  
14-16 Whittlesea-Kinglake Road, Kinglake  
**Ph 5786 1783**

Monday CLOSED  
Tuesday 9am - 9pm  
Wednesday 4pm - 9pm  
Thursday 4pm - 9pm  
Friday 9am - 9pm  
Saturday 9am - 9pm  
Sunday 9am - 9pm

**Breakfast**  
Veggie Lover /Egg Benedict & more

**Lunch**  
Soup/ Pasta /Crepes & more

**Dinner**  
Pizza /Pasta/ Parmas / Ribs /  
Lamb Shanks & more

**We cater for Gluten Free & Vegans**

**OUR DEAL SPECIALS**  
Pizza Deal \$40 / Family Deal \$55 /  
Pasta \$30 / Parmas \$40  
& Combo Burgers

**ALL DAY BREAKFAST & PIZZA  
FULL MENU TAKEAWAY**

# Council Family Day Care service to go to external providers

**Murrindindi Shire Council's Family Day Care (FDC) service is being transitioned to third-party providers to ensure continued access to quality childcare for local families.**

The council said the decision was in response to ongoing workforce challenges and financial pressures that have impacted the sustainability of the service.

"By working with external providers, Council aims to secure a stable and effective childcare service for the community into the future, with parents and children across our communities continuing to receive the same care under this new arrangement", a council statement said.

It said the Council has made concerted efforts in recent years to support early years education, including workforce strategies, infrastructure reviews, and the adoption of the Kindergarten and Childcare Strategy 2024–2029.

"Despite these proactive measures, external factors have necessitated this transition. Recent staffing changes, including the resignation of five educators and the Coordination Officer, have further limited the service's ability to meet compliance requirements under the National Quality Framework (NQF) and the Children's Services Act 1996. Current educator-to-child ratios also restrict capacity, reducing the service's viability".

The statement said that families can expect continuity in the high level of care they have come to rely on. The eight remaining educators are being supported to connect with alternative providers. Council will work closely with families to ensure the process is as seamless as possible and provide guidance and communication throughout the transition to minimise disruption.

"Council remains committed to supporting early years education and maintaining the availability of high-

quality childcare services in the region. Transitioning to third-party providers will help secure a sustainable approach to delivering these services in line with community needs".

Council's Community Wellbeing Portfolio Councillor, Jodi Adams, said the Family Day Care service has provided significant support to the community for the last 30 years and the service is highly valued.

"While this change may represent the end of a chapter for Council's direct role in the service and marks a shift in how the service is delivered, it is a necessary step to support the long-term availability and viability of quality childcare in our community", she said.

The Council will ensure that educators and families are well-supported during the transition to maintain continuity of care.

For more information, please contact Council's Coordinator Children's Services on (03) 5772 0333.

## A Cool Coding Club For Kids at Kinglake Library

**The Kinglake Library are running a Code Club for 8 to 12 year olds in term 1 this year as an introduction to the world of STEM learning.**

The course has been developed by a national not-for-profit organization, Creative Bytes, and is designed to be a pathway for young students with no prior knowledge of programming, coding or technology to start learning.

Lots more information is available on their website [creativebytes.org](http://creativebytes.org)

Murrindindi Shire Council ran the course at Yea Library last year and have sponsored the no-cost after school course for Kinglake this coming term for local boys and girls.

The outcome of the first programme is to build a small game using simple coding tools as a method to introduce STEM concepts to students.

The course will be delivered by a local resident who has worked in the IT industry for 20 years, is degree qualified in IT and has volunteered his time to bring a real world perspective to the course.

It will be held at Kinglake Library after school on Thursdays and Fridays in term 1.

It is a 10 session program which is scheduled to start on 13 February (week 3) for 5 weeks through the short term 1 - leaving weeks 1 and 2 for settling into the new year. The sessions start at 3:45 and run to 4:45 each Thursday and Friday at the Library.

Laptops and the like will be at the library, students do not require a computer and spots are limited to 10 for the first code club.

Contact the Library for a booking form on 5772 0750 by Friday the 7th of February.

## New Provider for Flowerdale Kindergarten

**A new Early Years Manager has been appointed to manage the Flowerdale Kindergarten.**

The Kindergarten operates independently but alongside Council's Maternal and Child Health services, from Council's facility at 3377 Whittlesea-Yea Road, Flowerdale.

Uniting (Vic/Tas) will manage the service following an expression of interest (EOI) process run by Council and the Department of Education.

The decision last year by Mitchell Shire Council not to renew the sub-lease on the kindergarten led to the search for a new provider.

The Kindergarten operates independently but alongside Council's Maternal and Child Health services, from the Council's facility at 3377 Whittlesea-Yea Road, Flowerdale.

The Council said it recognised the uncertainty and concern that a change like this can create for families.

"We are working with Mitchell Shire Council, Flowerdale Primary School, the Department of Education, the Flowerdale Kindergarten Committee, and local families to ensure a smooth transition", a council statement said.

For more information, contact Council's Children's Services Coordinator, Sue Porter, by calling (03) 5772 0333 or by emailing [sporter@murrindindi.vic.gov.au](mailto:sporter@murrindindi.vic.gov.au)

# Here We Go – 2025!

**L**ike every year the Christmas and New Year holidays seem to fly by. The lead up to the crazy time seems a distant memory as we now see Easter Eggs on the shelf (I know!) Ridiculous! There are many topics I would like to touch on. But my favourite at this time of year is for everyone to revisit expenses.

I know it sounds boring. But, you will be pleasantly surprised with how much you can save - utilities, phone, insurance and your home loan.

We have just revisited these (as I always do) and just with a rework of our existing power bill we are already saving around \$60 a month (\$720.00 annually) – that's A LOT of money!

Make sure you are comparing 'apples with apples'/ like for like policies or offers and you are getting bang for buck.

I've been keeping a log in my mind of some conversations over the holidays regarding children's/ teenagers perception of money. My largest concerns for this generation is that they use their cards for tap and go... just keep tapping. Maybe I am old school, but cash is king as far as I am concerned and teaching children good money habits at a young age helps instil long term habits for adulthood.

Not only is saving a wonderful thing it also helps them keep accountable for what they wish to spend. Tap and go does not! Counting money, separating into coin piles and knowing what they have to save and spend is a very valuable lesson for

them. Teenagers included.

Our daughter has been saving up the cans and kindly, people have also given her some to contribute to her count. At this stage over a year she has been able to earn up to \$300 just from doing this. Helping the environment and earning money – WIN/WIN.

I had a chat with a friend over the holidays who ended up at the chemist buying a mountain of things for her 8 year old. His words 'did the lady say \$14.00 or \$49.00?. The mum said \$49 his response was WOW that's A LOT of money. The mum agreed.

But, these are essential items that we need and \$49.00 to an 8 year old and to many is a lot of money. So explaining the benefits of needs versus wants should be high on the conversations list.

Our children have had this delivered in multiple conversations and we deliberately make sure they value money. It's when people have none that this is even more relevant. So budgeting, education around needs versus wants and ensuring they understand the tap and go process, might be a 5 minute chat - but well worth it.

OK – what does 2025 look like from here on in ...within the Finance World?.

Interest Rate Cuts – this is the main topic on everyone's lips. Will we see a decline? We never like to guess, but this has been a guessing game for a while now. Our economists deliver content to us every week with their forecasts.



Some are very close while others slightly off, so fingers crossed for a break and some reprieve from the rates this year. In saying this the property market will be slightly shifting and we are looking forward to seeing some Investors re-enter the market. Although this topic is best discussed with a Real Estate Agent (specialised in this field).

Home Loans – a forever moving platform with some new lenders entering the market and other lenders added to our forever growing panel of lenders. While content is delivered all over social media and people having their opinions on the home loan industry or finance world, please ensure you seek the right information from a Broker or your current Lender directly.

Living Expenses – Most people are living extremely tight at the moment. Committing to Credit Card debt to get through and manage their money. Also cost of living has exceeded greatly over time and impacts families differently.

I know our grocery bill (depending on the week) can range between \$300-400 and my largest hot tip is we buy a lot on sale. Nothing pains me more than a grocery bill.

If you need any assistance or guidance in the Finance space, please feel free to reach out for a chat – the coffee's on me.

Nicole Sevenich, 0412 169 035  
NS Finance & Mortgages  
Credit Rep Number 479851

## WINTER ART EXPO

**D**indi Open Studios and Kinglake Ranges Arts are combining.

We will remain an auspice of the Kinglake Ranges Neighbourhood House.

Invitations are extended to anyone who is interested in creating to have input in what this combination could become.

If you wish to create alongside others or explore something you haven't tried before in the comfort of a creative space, join us and be supported and inspired. kra@kinglakeranges.com.au

Planning is underway for a Winter Art Expo to be held 30 and 31 August.

Just an exhibition, not a competition, so if you have a project in mind or you are working on, consider exhibiting it with us.

We want to showcase your favourite piece(s) to our community.

Contact dindiopenstudios@gmail.com to express your interest.

"Creativity takes courage" - Henry Matisse.

**KRA** KINGLAKE  
RANGES  
ARTS



# 2025 The Year of Change

**We are now into full swing with 2025.**

While January sees a slow return to property enquiry, the end of summer brings the back to school and work crowd reigniting their new year's resolutions to move house.

This year, an election year, is going to be a pivot point in the market, and there are a lot of economic trends to keep an eye on that will shape the property market. Firstly, let's look at interest rates and inflation.

ANZ has revised its forecast for the first Reserve Bank of Australia (RBA) interest rate cut to February, thanks to a brighter inflation outlook. With core inflation at 3.2%—lower than expected—there's now a 74% chance of a February rate cut. If confirmed, this will mark the first rate reduction in over 4 years, providing much-needed relief for borrowers and potentially sparking increased buyer activity.

While nothing is guaranteed, the upcoming inflation report will be a critical factor. A rate cut would likely boost consumer confidence and encourage market movement, especially for first-

homebuyers and upgraders. Then, the next thing to move is the construction and the housing sector.

The construction sector is still feeling the pinch from high borrowing costs, but there are signs of recovery. Apartment, townhouse, and semi-detached approvals are showing positive trends, with a forecasted 4% increase in total approvals for this financial year. However, developers are cautious, with many projects on hold due to elevated costs and tight margins.

Rental prices remain under pressure, driven by population growth and low construction activity. A lower cash rate could ease these challenges and stimulate more projects to meet demand.

Good news for homebuyers: building costs are stabilizing finally, and land developers are offering incentives, such as rebates of up to \$40,000, to boost house and land package sales. While the cost of building has risen slightly, it's at the lowest rate in 3 1/2 years.

However, insolvencies in the construction industry have spiked by 28% compared to last year. Builders are

navigating tight margins and high financing costs, and some may struggle to remain viable in the coming months.

For buyers, this highlights the importance of working with experienced builders who have a proven track record.

Looking ahead, residential property prices are expected to rise by 3% nationally in 2025, with stronger momentum in the second half of the year if interest rates fall. This could mean a return to a strong Spring market after lacklustre performance over the past 3 years. Affordability remains a challenge, with nearly half of household income required to service a mortgage.

For our local market, a rate cut could attract more buyers, especially those seeking affordable options or looking to capitalize on steady price growth. Sellers may also benefit from increased demand, making early 2025 a strategic time to list properties while the weather is good.

When put into economic context long term, Australia's wealth has grown significantly over the past two decades, thanks to high commodity prices and strong



export revenue. However, productivity growth has slowed, and younger workers face increasing financial pressures. These broader economic factors will likely influence the RBA's decisions and, in turn, the property market in the first quarter of this year.

If you're thinking about buying, selling, or investing, now is a great time to prepare. A potential February to May rate cut could provide opportunities for buyers to secure better borrowing conditions, while sellers may see renewed market activity. As always, we are here to guide you through these changes and help you make the most informed decisions. Don't hesitate to reach out with any questions or for a market appraisal tailored to your property. Let's have a great 2025!

*Will Verhagen*  
[www.integrityrealestate.com.au](http://www.integrityrealestate.com.au)



**MOUNTAIN RANGES VET CLINIC**

**HOURS**

Sunday	Closed
Mon, Tues & Wed	9am-6pm
Thursday	9am-7pm
Friday	9am-6pm
Saturday	9am-12pm

Dr Kate Murray BVSc  
**5786 1777**  
 Shop 1/31 Whittlesea-Kinglake Road, Kinglake 3763



**Kinglake Riders Club**

Kinglake Riders rallies are held on the 4th Saturday each month at the club grounds at the Kinglake Trust Reserve, Kinglake.

**PRESIDENT:** LISA PORTMAN [lisaportman@bigpond.com](mailto:lisaportman@bigpond.com) PH 0428 373 171  
**VICE PRESIDENT:** PAT EVERINGTON [paeverington@bigpond.com](mailto:paeverington@bigpond.com) PH 0409 663 943  
**SECRETARY:** ALYSSA FLETCHER [alysaafletcher89@gmail.com](mailto:alysaafletcher89@gmail.com) PH 0458 618 143

**For advertising enquiries phone Neesha 0493 740 926**

# Kinglake CWA

**H**appy New Year to all. We sincerely hope the atmosphere created at our Light Up Kinglake event in December will permeate throughout the year and our community benefits from that positive vibe throughout the coming year.

Elsewhere in this edition of the magazine, we have nominated everyone who worked with us to create a wonderful family night which culminated with a 5m high Christmas Tree coming alight.

The looks on the over 220 attendees enjoying the BBQ and salads and drinks; the delightful voices of the combined primary school choir with teacher Tess presenting Christmas Carols; the CFA Santa and his big red truck giving presents to over 100 local children; and the finale when Santa turned on the lights of the 95% recycled plastic tree – what a successful community experience, and one of which we can all be proud.



Now the infrastructure is there, the aim is to continue to hold this event, probably on the last Saturday of November each year. There will be plenty of opportunity for more festive activities, so if you have any ideas to add family enjoyment, please email us [kinglakecwa@gmail.com](mailto:kinglakecwa@gmail.com).

We continue to assist with FoodShare contributions to Kinglake Ranges Neighbourhood House as well as graduation presentations to each student from our local primary schools.

Our fundraising for these and other projects is always active. Currently the imaginative minds are working on items for a stall at the Kinglake Cricket Club Trash and Treasure Market on 30 March.

If you would like to knit or crochet items like scarves, beanies etc, to assist our endeavours and need wool please phone Christine on 0407 056 346.

Till next time, stay cool this summer and most importantly, stay safe.

*The Kinglake CWA team*

## KINGLAKE POST OFFICE

**HOURS** Monday to Friday 9am-5pm

- Bank@Post On-line Banking and Bill Payments
- Passports and working with children checks (applications and interviews)
- ID Photos (passports etc)
- Telephony products and recharges (Telstra, Optus, Boost, Vodaphone and Virgin)
- Public phone and overseas calling cards
- Stationery and gift lines
- Greeting cards and wrapping paper
- Public Fax, Photocopying, Laminating



Ph/Fax: 5786 1209

MM



**SONGBIRD CAFE  
& LARDER**

*Local fresh cuisine for everyone*



**OPEN WEDNESDAY TO SUNDAY**  
10 WHITTLESEA - KINGLAKE ROAD, KINGLAKE  
(03) 5786 1275

[WWW.SONGBIRDCAFEANDLARDER.COM](http://WWW.SONGBIRDCAFEANDLARDER.COM)



**KINGLAKE RANGES  
NEIGHBOURHOOD HOUSE**  
6 McMahons Road Kinglake 3763  
T: 03 5786 1301 M: 0482 847 764

**FEBRUARY  
@ THE HOUSE**

*"Bringing People Together"*

The Neighbourhood House welcomes individuals and groups of all ages, abilities and walks of life, creating opportunities to enrich their lives through connections they might not otherwise make.

3rd  
9.30am

**MONDAY MORNINGS POP-UP CAFE. Coffee with friends, read a book or just chill!**

4th  
6.30pm

**CLAY CLUB. Every Tuesday evening during school term. \$220 for 18 sessions.**

8th  
1pm

**DIGITAL SKILLS FOR JOB SEEKERS. \$200 Full Fee or \$60 ACFE Funded.**

12th  
12pm

**HEALTH ABILITY. Free information on aged care services in the Ranges.**

12th  
7pm

**EMBROIDERY. Wednesdays for 6 sessions. \$70. Includes starting materials.**

13th  
5pm

**CREATIVE DANCE FOR YOUTH. Thursdays for 3 sessions. \$30 for 3 or \$15 casual.**

13th  
6.30pm

**EMBODIED DANCE FOR ADULTS. Thursdays for 3 sessions. \$30 for 3 or \$15 casual.**

14th  
10am

**INTRO TO HORTICULTURE. Every Friday for 10 sessions. \$70 includes all materials.**

15th  
9am

**BOAT LICENCE. \$180 Boat & PWC. PWC only \$80. For ages 12+ (boat licence only)**

21st  
5pm

**GNOCCHI FOR BEGINNERS. \$50 per person. Everything included.**

26th  
5pm

**CHARCOAL TO PASTEL DRAWING. 8-16 years \$130 per term. Adults 16+ \$220 per term.**

To register and pay online visit: [www.kinglakeranges.com.au](http://www.kinglakeranges.com.au)

Jan 18 Vocational Visit  
Philip Lobeys

Feb 5 First Rotary  
Meeting 2025

Feb 23 Kinglake Market

Feb 26 Vocational Visit  
Fish & Chippery

## Lift The Lid Fundraising Walk & Kinglake Ranges Show & Shine

We would like to thank EVERYONE that came & supported the events! Lots of planning and work went into putting on this free event for our community and we couldn't have done it without your support and help! The walk went off in between the showers with around 70 participants and we raised \$2,092 for the cause! Well done everyone! Unfortunately it rained in the afternoon but we still had plenty of awesome looking cars & noisy bikes. The BBQ was busy and the music was great! We had UGFM radio broadcasting and made sure we filled their time slot with Rotary info, Australian Rotary Health, Warren talking about Mental Health and the Kinglake Junior Footy kids also had a chat. Yarra Valley Live TV did a great coverage for us.

Special thanks to the crew of helpers from our club and from Southern Mitchell Rotary. Mother Nature threw everything she had at us but finished with sunshine. At the end of the day we raised funds for Research into Mental Health, a few more sponsor interests, a handful of community members want to join the committee and many ideas / advice for a better event next year! - Tamara & Nina



## A Cracking Christmas

What a fantastic night at our Rotary 2024 Christmas Party! Our very own Christmas Carol lovingly organised a raffle full of delicious prizes, Rowan wowed us with another stellar performance, Andy was dealing puddings, and Neil kept us laughing with some classic jokes. We were thrilled to have a big, full table filled with great company, fellowship and holiday cheer. Thank you to everyone who came and thank you to the Kinglake Pub for hosting us and once again cooking up a feast.



## Feed For The Grampians

There is an urgent need for feed in the bushfire-affected areas of the Grampians. These fires have left communities and their animals struggling, and we need your help to provide essential feed and support to those impacted.

We, together with the Kinglake Lions, Kinglake Market, and the Inner Wheel Club of Kinglake Ranges, are working together to make a difference in a situation we know all too well. We have opened up our Disaster Relief Account to accept donations, with 100% of funds allocated directly to helping those in need.

Every dollar raised will go towards providing feed and relief to farmers and locals who are doing it tough in the aftermath of the fires. Together, we can ease the burden and help these communities recover.

**Name: Rotary Club  
of Kinglake Ranges**

**BSB 633 000  
Acct 149 725 327**



10AM - 2PM



2025	FEB 23	MAR 23	APR 27
Book a Stall	MAY 25	JUN 22	JUL 27
	AUG 24	SEP 28	OCT 26
	NOV 23	DEC 21 -	TWILIGHT MARKET

Kinglake Community Centre  
1 EXTONS RD. KINGLAKE CENTRAL

PARKING & GATE MANAGEMENT ASSISTANT DATES ARE NOW OPEN FOR 2025!

WOULD YOUR ORGANISATION, CLUB OR COMMUNITY GROUP LIKE TO EARN \$500 FOR HELPING?

APPLY OR FIND OUT MORE. EMAIL: KINGLAKEMARKET@GMAIL.COM?

# Inner Wheel Club of Kinglake

## Our History

**R**otary International was started in 1905 in the USA, by a group of men who saw there was a need for volunteering. This important group spread throughout the world.

During WW1 the Rotarian ladies, wives of the Rotarian husbands, formed The Service Club to assist their husbands. This group of women spread to The United Kingdom. In Manchester, United Kingdom, 100 years ago The Inner Wheel organisation was first named and model rules formulated as a base line for present day constitution.

Thus, this explains our emblem which is a smaller wheel contained within the Rotary wheel.

Present day Inner Wheel is now worldwide and the largest women's group organisation.

Solely operating independently from Rotary for the last 100 yrs.

### Objectives.

To encourage the ideals of personal service.

To promote true friendship

To foster international understanding.

Australia today has a total of 89 clubs.

Australian Inner Wheel is a major donor to Cord Blood Research. Every year in October 3 grants of \$65,000 are given to nominated research institutes in Australia.

They are investigating finding treatments or cures to a host of human elements from this valuable life giving blood.

The international project at present is in East Timor providing assistance to children with schooling.



Every club in Australia raises funds by holding friendship days, fun runs, selling produce at local events or a social event that would have raffles. These club funds are then donated to nominated charities in the club's local area.

The Kinglake club formed 10 years ago as a need for women to help women after the devastating fires of 2009 and are part of District 61 which has a total of 8 clubs in all.

The Kinglake club is a group of 15 passionate women with more empty chairs available. We meet at 630pm on the 1st Tuesday of the month at St Peters church. Here we discuss the running for the BBQ sausage sizzle for the monthly Rotary Kinglake market, upcoming club

events in our area and enjoy each other's company. All funds raised by the BBQ are collected into a charity fund account.

Twice yearly our club in June and December, nominate local charities, ie KRNH Food Share, Wildlife rescue and local schools are credited from this fund.

Be sure to visit the Monthly Rotary Kinglake market and come up to the BBQ for a chat and for the best cooked sausage in bread in the Ranges.

New members are most welcome and for more information please email: [iiw.au.kinglakeranges@gmail.com](mailto:iiw.au.kinglakeranges@gmail.com)

For more information about Inner Wheel go to the website: [innerwheelaustralia.org.au](http://innerwheelaustralia.org.au).



## Lions Club of Kinglake

**H**ello everyone, firstly we wish you all a happy and safe new year and hope everything goes well for you.

In December the Lions Club again awarded a bursary to a Y12 student to help them with their further studies. The recipient this year is Jordan Kelly who wants to go to university to study Primary teaching.

With the terrible fires in the Grampians area in Western Victoria we are donating money to help with the supply of feed for stock after the pastures were burnt out. This money will go to the "Need for Feed" organisation who are a volunteer group run by Lions Clubs Australia. Other community groups are also doing the same.

*Ken Aitken, President.*



### **'ALL THINGS BUSINESS' IN KINGLAKE**

Council and Business Victoria are kickstarting 2025 with 'All Things Business' in Kinglake. This is a fabulous opportunity for new and existing Murrindindi Shire based businesses and entrepreneurs, commencing with a business breakfast, leading into an interactive workshop and access to free business advisory services - all on the same day, in the same location.

- Tuesday 18 February, commencing from 7.30 am
- Kinglake Pub, Lawson Room
- 28 Whittlesea-Kinglake Road, Kinglake

Learn more and register on our website at [murrindindi.vic.gov.au/smallbusiness](http://murrindindi.vic.gov.au/smallbusiness)

### **COMMUNITY AWARDS NOMINATIONS OPEN**

Nominations are now open for the 2025 Murrindindi Shire Community Awards. These awards honour local volunteers for their exceptional community spirit and willingness to help others.

Our four Award categories are:

- Volunteer of the Year
- Senior Volunteer of the Year
- Young Volunteer of the Year
- Community Group or Initiative of the Year

Nominations close on Sunday 24 March. Criteria and nomination forms are available at [theloop.murrindindi.vic.gov.au/2025Awards](http://theloop.murrindindi.vic.gov.au/2025Awards)

You can also pick up a paper nomination form at our Library and Customer Service Centres in Alexandra, Kinglake or Yea, and the Mobile Library.

The 2025 Award winners will be announced and acknowledged at a volunteer appreciation event held during National Volunteer Week (19-25 May 2025).

### **EMERGENCY PREPAREDNESS TRAINING**

Council is hosting FREE emergency preparedness training in Flowerdale, Glenburn and Toolangi, as part of the LEAPing into Resilience Project. Visit our website to register, or call Council on 5772 0333.

#### **Chainsaw Operation: Two-day course**

Friday 7 and Saturday 8 February, 9.00 am - 5.00 pm  
Flowerdale Community House, 36 Silver Creek Road  
[murrindindi.vic.gov.au/chainsawtraining](http://murrindindi.vic.gov.au/chainsawtraining)

#### **First 72 Hours Workshop: Glenburn**

Monday 10 February, 6.00 - 8.30 pm  
Glenburn Community Hall, 3876 Melba Highway  
[murrindindi.vic.gov.au/72hoursglenburn](http://murrindindi.vic.gov.au/72hoursglenburn)

#### **First 72 Hours Workshop: Toolangi-Castella**

Tuesday 11 February, 6.00 - 8.30 pm, Toolangi Castella Community House, 1715 Healesville-Kinglake Road.  
[murrindindi.vic.gov.au/72hourstoolangi](http://murrindindi.vic.gov.au/72hourstoolangi)

### **JOIN OUR BIG CONVERSATION**

Enjoy a light meal while you chat, connect, and share your BIG ideas with other community members, Councillors and Council officers. Your feedback will help shape our new Council Plan.

Come along to the Kinglake Community Centre on Tuesday 18 February from 6.00 - 8.00 pm. Register at [murrindindi.vic.gov.au/councilplan](http://murrindindi.vic.gov.au/councilplan)

### **GOULBURN MURRAY SOLAR SAVERS**

Council is holding pop-up information sessions to let our community know how the Goulburn Murray Solar Savers Program works, and how it can help save you money. Learn more at:

- **Alexandra FoodWorks:** 19 February, 11.00 am to 1.00 pm
- **Eildon Grocer:** 19 February, 2.00 to 4.00 pm
- **Marysville Grocer:** 26 February, 3.00 to 5.00 pm
- **Yea FoodWorks:** 27 February, 3.00 to 5.00 pm
- **Kinglake FoodWorks:** 6 March, 2.00 to 4.00 pm

There will more sessions over the coming months, so keep an eye out for one near you.

### **CAPACITY BUILDING PROGRAM KICKS OFF**

Council's Capacity Building Program includes tailored training, mentoring, and networking events aimed at equipping participants with practical skills and knowledge. By strengthening the capacity of individuals and organisations, the Program seeks to build on the foundations of our connected and resilient community.

Find out more and register your interest in the program at [murrindindi.vic.gov.au/capacity-building](http://murrindindi.vic.gov.au/capacity-building)

### **COUNCIL MEETING DATES FOR 2025**

Council meetings are a good way for the community to see how local decision-making takes place and to observe Council's democratic processes. Council Meetings are live-streamed to the public via Facebook and our website.

For a list of Council Meeting dates for 2025 and more information about Council meetings, visit [murrindindi.vic.gov.au/councilmeetings](http://murrindindi.vic.gov.au/councilmeetings)

### **STAY INFORMED**

To stay up to date with the latest Council news, follow us on Facebook, visit [murrindindi.vic.gov.au/news](http://murrindindi.vic.gov.au/news) or subscribe to our e-newsletter Murrindindi Matters.

### **GET IN TOUCH**

[customer@murrindindi.vic.gov.au](mailto:customer@murrindindi.vic.gov.au)  
[murrindindi.vic.gov.au/request](http://murrindindi.vic.gov.au/request)  
5772 0333

# Our Heritage

## Summer Concerns

**F**or many present and former Kinglake residents, the television coverage of the disastrous bushfires in Los Angeles must surely have brought to mind sad memories of the dreadful events and the aftermath of Black Saturday 2009.

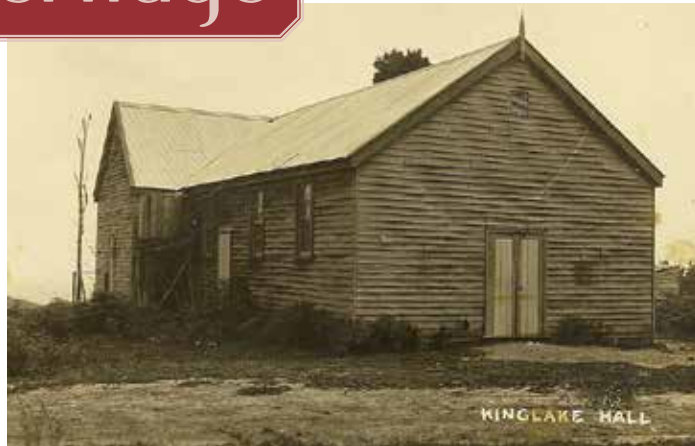
Unfortunately, Kinglake is in one of the most fire-prone areas of Australia and bushfires had been part of its recorded history since the first European settlers came here in the 1860s and 1870s.

Research in the old newspapers on the Trove website shows that, as early as 1893, a bushfire 'raging' in Kinglake destroyed 'a great deal of grass and several chains of fencing and threatened the home of Mr Atkins'.

In 1910, a bushfire started at the Cascades at Kinglake West, with the house and general store of William Joyce in danger and also the Olney home at Wallaby Creek.

That and some other early fires were fairly minor events but, in February 1926, a fire burning south from Glenburn hit the little township of Kinglake with disastrous results.

The original public hall, a Mechanics Institute and Free Library built in 1897 on the highest point in Kinglake, was burnt down, as was the original Catholic Church, which had been built in 1901 on the present site of St Mary's at the foot of the hill. St



*Original Kinglake Hall.*

Peter's Church, which had only opened in 1920, was saved by a local farmer, John Jennings, who stayed on watch all night and put out falling embers with a hand-operated fruit spray.

The children from the Kinglake State School were evacuated and brought to the Kinglake Post Office to shelter there with their teacher and some of the parents, and they were safe there, while Thomson's hotel next door burnt to the ground. Frank and Annie Thomson lost their home and their business but, fortunately, Frank's parents' house and the post office were saved by the efforts of Daisy and Mabel Thomson keeping the little building damped down.

There was other damage as well at this time, two houses destroyed along with several weekend cottages, other houses damaged, sheds destroyed, Hubbard's mill burnt out and many orchards and miles of fencing lost.

On Friday 13 January 1939, fires burned in many parts of Victoria and the newspaper report states that 'on Friday night, practically the whole of the mountain slopes from St Andrews North to the Kinglake

Hotel were in flames and the beautiful Jehosophat Valley was destroyed'.

The fire threatened Professor Laver's house and several others, and Mr Ron Skelton 'was rendered unconscious by the dense smoke and was found lying in the paddock by his house with a wet bag over his head and later taken to hospital'.

In 1962, a bushfire burnt north from Warrandyte through St Andrews towards Kinglake but was halted by a sudden wind change before reaching the top of the ridge. In 1983, fire came towards Kinglake West from the Flowerdale-Wallaby Creek direction and required the efforts of many local and assisting fire-fighters to get it under control.

In January 2006, as many readers will remember, a fire advanced steadily on Kinglake over two days from the Glenburn area and, although not moving at high speed, it posed a serious threat. An army of fire-fighters gathered but, 'by sheer luck', just as it reached the outskirts of



*Harry & Elizabeth Thomson in ruins of original Kinglake hotel*



*First Kinglake Catholic Church*

the town, a storm arrived at 6.30pm and dumped 20mm of rain on the fire front.

With fire an ever-present possibility in summer, Kinglake is fortunate to have two experienced and capable fire brigades, Kinglake established in 1944 and Kinglake West in 1978, and also the Kinglake SES, all of who are available for advice and assistance to help Kinglake residents to prepare their properties and their family plan in case of emergency.

*Deidre Hawkins  
Kinglake Historical Society  
kinglakehistoricalsociety@gmail.com*

## Kinglake Heritage Centre

**Kinglake West Reserve ~ Open Sundays 12 noon – 4pm  
\$2 donation appreciated ~ 150 Years of Kinglake Stories  
Groups weekdays by appointment – phone 0414 255 893**



Accounting Solutions

**LOCAL ACCOUNTANT PREPARED TO WORK FOR YOU**  
**PROFESSIONALISM AND PRIVACY GUARANTEED**

Specialising in

- On & Off site bookkeeping
- BAS lodgements & preparations
- Personal & small business tax returns
- After hours services provided for NO extra fee

**Murray Leadbetter**  
Registered Tax Agent

Mobile: 0438 778 303  
Email: [murray.leadbetter@gmail.com](mailto:murray.leadbetter@gmail.com)  
PO Box 260 Kinglake 3763

ADVERTISEMENT

**Cindy McLeish MP**  
**State Member for Eildon**

*Your local voice for Murrindindi Shire and the Kinglake Ranges*



**Contact Cindy**

Shop 10, 38-40 Bell Street, Yarra Glen  
PO Box 128, Yarra Glen VIC 3775  
03 9730 1066  
[Cindy.McLeish@parliament.vic.gov.au](mailto:Cindy.McLeish@parliament.vic.gov.au)

**[www.CindyMcLeish.com.au](http://www.CindyMcLeish.com.au)**

Authorised by Cindy McLeish MP, Shop 10, 38-40 Bell Street, Yarra Glen  
Funded from Parliament Electorate Office & Communications Budget.

**FREE EMERGENCY PREPAREDNESS TRAINING**



**Council is hosting FREE Chainsaw Operation training in Flowerdale, and First 72 Hours - Emergency Preparedness training in Glenburn and Toolangi-Castella, as part of the LEAPing into Resilience Project.**

**CHAINSAW OPERATION: TWO-DAY COURSE**

**Flowerdale**

Friday 7 and Saturday 8 February, 9.00 am - 5.00 pm  
Flowerdale Community House  
36 Silver Creek Road, Flowerdale

This course is perfect for beginners, or those looking to further their knowledge around the use, operation and servicing of chainsaws.

Chainsaws are provided, however you will need to bring your own Personal Protective Equipment.

Lunch is included.

Places are extremely limited for this course, so please complete an Expression of Interest by visiting our website at [murrindindi.vic.gov.au/chainsawtraining](http://murrindindi.vic.gov.au/chainsawtraining) or calling Council on 5772 0333.

**FIRST 72 HOURS: EMERGENCY PREPAREDNESS**

**Glenburn**

Monday 10 February, 6.00 - 8.30 pm  
Glenburn Community Hall  
3876 Melba Highway, Glenburn  
[murrindindi.vic.gov.au/72hoursglenburn](http://murrindindi.vic.gov.au/72hoursglenburn)

**Toolangi**

Tuesday 11 February, 6.00 - 8.30 pm  
Toolangi Castella Community House  
1715 Healesville-Kinglake Road, Toolangi  
[murrindindi.vic.gov.au/72hourstoolangi](http://murrindindi.vic.gov.au/72hourstoolangi)

Learn how to prepare for the first 72 hours after an emergency and explore how, together as a community, you can build knowledge and reduce vulnerabilities.

Book for one of the free half-day workshops by visiting the links above, or calling Council on 5772 3333.

These community workshops are part of the LEAPing into Resilience Project, a joint initiative between Mansfield, Strathbogie and Murrindindi Shire Councils and funded by the Australian Government.

# Hall's Funeral Services



An Australian owned and operated family Funeral business that understands the needs of people at a time of grief.

Offering a wide range of services including pre-arranged and prepaid funerals.



**Phone: 9438 5416**

**24 Hours a Day, 7 Days a Week**

• **15 Station Street, Diamond Creek**

• **50 Church Street, Whittlesea**

**www.hallsfunerals.com.au**

## RADSKILL IMAGING GROUP



**NOW AT 2 LOCATIONS FOR YOUR CONVENIENCE  
KILMORE & WHITTLESEA**

*The well-being of our clients is our priority*

**Radiologist on site • All referrals accepted • Walk ins welcomed**

**Our services include:** **MRI coming soon to Kilmore**

- All general, dental and chiropractic X-rays.
- All general ultrasounds, pregnancy ultrasound, MSK (musculoskeletal ultrasound) and doppler ultrasound (leg arteries).
- CT scans both contrast and non contrast of any body part.
- CT angiogram with guarantee report within hours.
- Bone densitometry for osteoporosis screening.
- Cortisone joint injections.



[www.radskillimaging.com.au](http://www.radskillimaging.com.au) | E: [info@radskillimaging.com.au](mailto:info@radskillimaging.com.au)

**KILMORE MEDICAL IMAGING**  
Phone 5781 0033 | Fax 5781 0044  
107 Powlett Street, Kilmore  
Open Monday – Friday 9am – 5pm

**WHITTLESEA MEDICAL IMAGING**  
Phone 9716 0278 | Fax 9716 0273  
2-3/81 Church Street, Whittlesea  
Open Monday – Friday 9am – 6pm  
Saturday 10am – 4pm



## KINGLAKE CHINESE MEDICINE

**& NATURAL HEALTH CENTRE**

You will find us just behind the United Service Station  
**1 Robertson Rd Kinglake**

Now Available in our new studio!  
Qi Gong with Chrys Tuesday 10 to 11am  
from 22 October \$40 full \$35 Conc

Yoga Vinyasa with Karina 7 to 8pm Wed  
start 30th Oct  
Qi Flow Yoga/Tai Qi/Qi Gong blend with Karina  
Thursdays 1pm to 2.15pm  
\$35 full and \$30 concession

\$80 deposit and all go for 8 weeks.  
Call us to secure your spot anytime!

**Dr Angela Palmer** TCM B.ApSc B.TCM AHPRA reg.

**5786 1889** [www.kinglakechinesemedicine.com.au](http://www.kinglakechinesemedicine.com.au)

• Work cover Approved/Private Health Fund Approved



# KINGLAKE PHARMACY

**3/1 VICTORIA RD, KINGLAKE**  
P 5786 1109  
F 5786 1049



**MONDAY - FRIDAY 9AM - 5:30PM**  
**SATURDAY 9AM - 12:30PM**

## Meet Our New Physiotherapists and Enhance Your Well-Being at Whittlesea Physiotherapy & Clinical Pilates

**A**t Whittlesea Physiotherapy & Clinical Pilates, we are committed to supporting our community's health and wellness. Our team is dedicated to helping you feel better, move better, and get back to doing what you love. We are excited to introduce two exceptional physiotherapists who have recently joined our team, bringing fresh expertise and a passion for delivering personalised care.

### Meet Our New Physiotherapists:

• **Sujan Khanal:** Sujan is a highly experienced physiotherapist specialising in musculoskeletal and sporting injuries. With a rich background in neurological, geriatric, and post-operative rehabilitation, Sujan is dedicated to evidence-based interventions. His skills in running assessments, dry needling, kinesiotaping, and manual therapy are complemented by his IOC Strength and Conditioning certification. Sujan has served as the lead physiotherapist at major sporting events, including the Asian Games, and continues to work with a Victorian Premier Cricket team. His goal is to provide clients with the tools for optimal, pain-free movement, enabling them to lead active lives.

• **Jackson Elzink:** Jackson completed his Bachelor of Physiotherapy (Honours)

at Federation University and has gained experience across hospitals, clinics, and sports environments. He is passionate about treating a wide range of conditions, from musculoskeletal issues to post-surgical rehabilitation. Jackson's honours research focused on the effects of acute repetitive head impacts in boxing athletes, fuelling his interest in the challenging concussion landscape. Outside of his professional life, Jackson enjoys maintaining his fitness, spending time at the beach, and supporting his favourite sports teams.

### Our Commitment to Your Health:

Our clinic offers a comprehensive range of services, including physiotherapy, clinical Pilates and specialised exercise services, sports injury management, and comprehensive concussion services. We believe in providing personalised treatment plans tailored to each individual's needs. Whether you're recovering from an injury, managing a chronic condition, or looking to enhance your overall well-being, our team is here to support you every step of the way.

### Latest News:

• **Bone Strength Program:** Commencing 3 February, this program is designed to enhance bone density, strength and balance.



• **GLA:D Back Program:** Starting 10 February, this program focuses on managing persistent back pain and improving function.

• **GLA:D Hip and Knee Program:** Kicking off on 31 January, aimed at those dealing with hip and knee osteoarthritis.

• **New Running Assessments:** We now offer comprehensive running assessments to optimise your performance and prevent injuries.

• **Preseason Baseline Testing:** Don't forget to book your preseason baseline test in preparation for the upcoming sports season!

### Book Your Appointment Today:

Experience the benefits of working with our skilled physiotherapists. Book your appointment online or call us at 039716 2250 to schedule a session at your convenience. Let us help you achieve your health and wellness goals.

At Whittlesea Physiotherapy & Clinical Pilates, we're not just about treating injuries; we're about empowering you to live your best life.

### Notice of Precipe

Virginia Martin© (nee White), of Whittlesea, Victoria, is not a voluntary transactor in commerce, and am the irrefutable Holder in Due Course of my properties and all associated copyright protected Trade Names since unrebutted lawful Reconveyance to the Land and Soil jurisdiction of Terra Australis also known as the Commonwealth of Australia Public Recording Number RPP44 63900 05100 27190 81606, Proclamation Date 23rd July 2024. Thus severing usufruct subjugation ties with the occupying corporate government of Australia in its entirety. Immediately cease and desist any further infringement upon these copyright protected financial instruments and cease and desist misaddressing Virginia Martin© (nee White) in fraudulent debased Dog-Latin, GLOSSA.

### Notice of Precipe

Isabel Conway© (nee lob), Graeme Conway© both of Whittlesea, Victoria, are not a voluntary transactors in commerce, and are the irrefutable Holders in Due Course of my/our properties and all associated copyright protected Trade Names, Sole2Soul Nurturing©, Soul2Sole Nurturing©, since unrebutted lawful Reconveyance to the Land and Soil jurisdiction of Terra Australis also known as the Commonwealth of Australia Public Recording Number RPP44 63900 05100 36154 57601 and RPP44 63900 05100 36154 58608, Proclamation Date 19th July 2024. Thus severing usufruct subjugation ties with the occupying corporate government of Australia in its entirety. Immediately cease and desist any further infringement upon these copyright protected financial instruments and cease and desist misaddressing Isabel Conway© (nee lob) and Graeme Conway© in fraudulent debased Dog-Latin, GLOSSA.



Impartial, independent  
advisors & analysts  
since 1964

Yarra Valley Valuations  
Incorporating Geoffrey Pope & Associates

### Valuations for:

- Family Settlements
- Before you Buy/Sell
- Mortgage and Refinancing
- House Insurance Valuations
- Rating and Taxation Dispute
- Capital Gains Tax / Stamp Duty
- Depreciation Schedules
- Probate and Estate Valuations

**Your post-fire  
property experts,  
Experience and  
knowledge!**

P.O. Box 121  
Seville 3139  
**Ph: 5961 9176**  
admin@yvv.com.au  
www.yvv.com.au

### Notice of Precipe

Liane Karen Dawson© (nee Eastwood Jones – Virtue-Eastwood Dawson), Yates Ray Slone©, both of South Morang, Victoria, are not a voluntary transactors in commerce, and are the irrefutable Holders in Due Course of my/our properties and all associated copyright protected Trade Names, Liane Karen Dawson© – 5D Dog Wash©, Yates Ray Slone© – Soul Food©, since unrebutted lawful Re-Conveyance /Conveyance to the Land and Soil jurisdiction of Terra Australis also known as the Commonwealth of Australia, Public Recording Number RPP 44 63900 05100 36154 55607 and RPP 44 63900 05100 36154 56604, our Proclamation Date is 24th July 2024 and 23rd July 2024. Thus, severing usufruct subjugation ties with the occupying corporate government of Australia in its entirety. Immediately cease and desist any further infringement upon these copyright protected financial instruments and cease and desist misaddressing Liane Karen Dawson© (nee Eastwood Jones – Virtue-Eastwood Dawson) and Yates Ray Slone© in fraudulent debased Dog-Latin, GLOSSA.

## THE YEAR OF THE GREEN WOOD SNAKE

Welcome to the Year of the Green Wood Snake, a year I am certain will be one to remember!

The snake is a controversial creature in Western culture. It represents everything from betrayal and fear to the symbol of medicine with the twin snakes called the Caduceus wrapped around a staff beneath the wings of Mercury/Hermes, who, Greek legend has it, threw the staff to break up a fight between warring snakes who slithered up the staff bringing conflict resolution.

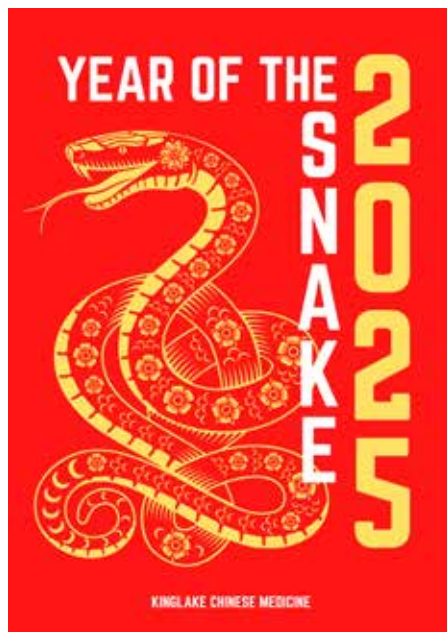
Interestingly the American Army Medics use this symbol on their uniforms as a symbol of neutrality on the battle field.

As regular readers of this column will know, at the beginning of each year I take a month off the practical physical health focus of my column to present an overview of the year of the Chinese Zodiac.

Just a note on Chinese Astrology, unlike Western Astrology it is not predictive and does not follow the planetary alignments. Instead, it looks more at the 'climate' or flow/feel of the year, depending on the animal sign that you correspond to according to your year of birth (look up Chinese zodiac online to find your animal). They follow a 12 year cycle based on Jupiter's 12 year journey around the sun.

As we leave the fiery Yang Wood Dragon behind with cinders in its wake, this snake year is a Yin Green Wood Snake that in eastern astrology suggests a less frenetic year. An opportunity to reflect, examine our past and all that brought us here, and to look inside ourselves for the insights we have gleaned about our deeper natures.

No matter what culture you look at, the shedding of the skin of the snake represents renewal, cleansing and discarding what was appropriate in the past but no longer serves us. Even the word 'hygiene' comes from the daughter



{Hygenia} of Asclepius, the Greek physician. Asclepius was depicted with a staff with a single snake wrapped around it. Hygenia, who worked with her father, was depicted with a snake drinking from a chalice, suggesting cleansing and renewal.

Other key aspects of this year include flexibility, patience, wisdom, observation and timely action. The snake will patiently wait, warming itself in the sun, waiting for it's opportunity to strike and only when the time is right, it will spring into action. Don't rush into any long-term decisions this year.

Plan ahead and begin to carve a new path for your future while staying flexible like the snake, ready to weave and change as new circumstances present themselves. No use banging your head against a rock, better to simply adjust your path.

Change is absolutely certain this year

so like a young green sapling, remain adaptable. Draw from internal sources to fortify you when times are difficult and cultivate your self-awareness.

When the snake tempted Adam and Eve to eat of the tree of knowledge, humanity became self-aware and thus given free will. This free will came with consequences of our actions and this plays out in our lives. Deep reflection is a tool for self-awareness and can allow us to see more clearly what no longer serves us so we can shed these 'coping mechanisms' and forge a new path.

Culture and the arts will feature this year as creatives blossom with the calmer Yin energy. There is a spark of inspiration in all of us, and in a Yin year the light becomes dimmer, so we need to cultivate our own spark through music and other creativity forms to shine that light for ourselves and all around you.

Nourish yourself with wholesome food, cut out all chemicals and ultra-processed foods. They are simply poison.

Balance Yin and Yang, action with rest and progress with reflection, fun times with contemplation and do not fear change. Plan ahead and be strategic with your plans and stay flexible.

The only way to evolve is to face life's challenges and learn from our mistakes. Journal, learn to meditate, take up Tai Ji, Qi Gong or Yoga. Exercise for pleasure and get outside in nature daily even if it's just a walk around the block. Most of all be patient and observant and enjoy your year.

Stay well

*Dr Angela Palmer  
Kinglake Chinese Medicine*

# Church Services

## ALABASTER CHURCH KINGLAKE

### Ellimatta Centre

94 Whittlesea-Kinglake Rd, Kinglake

Sunday service: 10am

3rd Sunday of the month: Community Meal

Instagram @alabasterkinglake

W: [www.alabasterchurch.org.au](http://www.alabasterchurch.org.au)

E: [michelle@mcchurch.org.au](mailto:michelle@mcchurch.org.au)

## ANGLICAN CHURCH

### St Peter's Memorial Church:

Cnr Bald Spur/Whittlesea-Kinglake Rds, Kinglake (Mel 250,B4)

St Peters Memorial Church

Sunday service: 8.30 am

Minister: Rev'd Dr Walter Firth 0439 447 395

(03) 9716 2042

### Christ Church, Whittlesea

5-9 Wallan Rd, Whittlesea (Mel 246E9)

Sunday service: 10.30am Communion

Minister: Rev'd Dr Walter Firth 0439447395

03 9716 2042

[Walter.firth@gmail.com](mailto:Walter.firth@gmail.com)

Weddings and baptisms by appointment

## CAMPFIRE HOME CHURCH – KINGLAKE

Monthly fellowship and meal

2nd Sunday of the month from 5pm.

Prayer and fellowship every Wednesday -9pm.

ALL WELCOME – Ring Mark (0408867775) for details.

## NEW HORIZONS

28 Forest Street, Whittlesea

Website: [www.nhchurch.com.au](http://www.nhchurch.com.au)

Administrator: 9716 3057 / 0408 127 043

## ST MARY'S CATHOLIC CHURCH KINGLAKE AT CHRIST THE LIGHT PARISH

128 Main Road, Kinglake

Sunday Mass: 8:30am

Parish Priest: Fr Hien Vu

Office: St Mary's Primary School, 2-20 Fir Street Whittlesea

For all enquires for Baptisms, reconciliation, First Communion or Confirmation,

Please call the office:

Phone: 9412 8493 or Mobile: 0448 101 401

Office hours: Tuesday-Friday, 9am-4pm

Email: [merndawhittlesea@cam.org.au](mailto:merndawhittlesea@cam.org.au)

Website: [www.christthelightparish.org.au](http://www.christthelightparish.org.au)

## WHITTLESEA PRESBYTERIAN

Weekly services, including Sunday School

10.30am, 7 Lime St. Whittlesea

Enquiries: A. Johnson 9407 1797

Sunday School: Adele 9715 1198, Diane 5783 1658



**Fast  
Cost Effective  
Spraying  
Seeding  
Fertilizing**

**Nimble, broad acre or  
selective, no job too  
small or too large.  
Ideal for hilly,  
boggy and  
flat country**

**0468 852 140**

[www.spotondrones.com.au](http://www.spotondrones.com.au)



Upto 16ltr/min or 20+ Acres/hr



# ACTION FIREWOOD

 Find us on  
Facebook

# REDGUM

**Call/Text Mitch**  
**0448 583 861**

*Free delivery to the Kinglake area*

# Discovering Our Fungi

**Join the Dindi Wild + Free Co on a 3 hour long Environmental Science field trip to discover all about mushroom identification, cultivation, fungal-ecology, microscopy, and native and invasive species of fungi in our region.**

On 2 June at Kinglake Forest TBC.  
Cost: Individuals: \$40 per person  
Families of 4 plus: \$30 per person  
Children under 5 are FREE.

We are so excited to be joined by Environmental Scientist, Ema Corro, from the Mycelium Lab Australia & Coordinator of Mycommunity ~ Applied Mycology this June in the beautifully wild Kinglake forest for a field trip.

Immerse yourself in the mystical mountainous forested region of Kinglake while learning together with fellow nature loving Home Educators! Limited spaces available.

Mycommunity is not-for-profit community organisation that aims to increase public awareness about fungi and the vital role they play in the ecosystem, for health and environmental sustainability.

Dindi Wild + Free Co are also excited to have a number of fun and fantastic events planned for 2025. So far we have a wonderful range of learning opportunities all set for each month of the year in Murrindindi and surrounding region for Home Educators.

So far, we have a; Heritage Mountain Railway and Museum Tour, an edible Food Forest Tour and Summer Alps



Camp, Basket Weaving Course, Adventure Resort Day, a Food Forage Workshop, the Fungi Forage Field Trip in Kinglake and a Kayaking Camp.

Dindi Wild + Free Co is the Murrindindi Home Education Collective that explores the great outdoors of our wonderfully wild region together.

We are dedicated to promoting healthy habits from childhood woven into education for a lifelong foundation of character and wellbeing.

Our collective offers wilderness adventures and learning opportunities in the region, welcoming like-minded nature lovers to come and explore with fellow freedom loving Home Educators of all ages.

## WHAT WILD + FREE MEANS TO US

**Wild** is as it is in the natural world, as

it was created by the Grand Organised Design (the universe) OR simply organically IS (was 'meant to' be).

**Free** is, as we were made to be, unbound by the ways of the world.

**Free** from perpetual overdrive culture and the temptation of buying into the idea of never being enough and 'keeping up'.

**Wild**, unshaped by human judgment but the ultimate goal of peace and enlightenment.

**Free** to be as we were designed, not according to opinions, but to live out our unique purpose and calling – seeking wisdom and knowledge accordingly, not by the standards of the mere minds of cluttered bias and dogma.

**Wild**, as in; retreating as we were meant to, so that we may hear the words of wisdom being whispered in our ears and hearts. The voice above and within, only meant for us.

In the wilderness that has so often revealed great wisdom, through millennia... out in the quiet light that fortifies. Not hiding behind walls, beyond necessity.

**Free**... to quietly breathe in the life we've been given, undistracted by the ideas, limitations and constructs of time and expectation.

If you would like to join our collective or find out more about any of our upcoming events, head to [www.dindiwildandfree.co](http://www.dindiwildandfree.co) You can also find us on facebook at [www.facebook.com/dindiwildandfreeco](http://www.facebook.com/dindiwildandfreeco)

# ENVIRONMENT MATTERS

## Heatwaves

**Throughout the season, we find ourselves experiencing the phenomenon known as heatwaves. In many countries, similar to ours, they can be a potential threat in terms of those who reside there. They have become a major part of our climate too.**

When low in air pressure, heatwaves are produced, having consequences on wind and climate. Skies that are distinct in form, cause heat that traverses from the sun to extend towards the Earth. When this happens, warm air ascends. For that reason, the impact of high pressure compels the air to move through, and in turn, contains the warmer air from below.

The excess heat factor index (EHF) classifies heatwaves into three main



*Image courtesy of Priya Mohandoss*

categories, being low-intensity, severe and extreme. This index analyses such events when they happen throughout a span of three days, with temperatures soaring more than usual, in higher or lower capacities in a certain site within the past 30 days.

In turn, ecosystems become affected due to heatwaves, causing species reduction, tree damage and increased chance of infernos.

Depending on the area, those that undergo desert conditions are further affected, causing vegetation to singe due to shortage of rain and increased amounts of carbon dioxide spreading into the skies above, instead of being stored through carbon sinks. Similarly, rural towns that undergo agrarian regimes, for instance, crop producing or cattle rearing are most liable to experience the state of heatwaves.

Although these events continue to prevail, we must gain the expertise to sustain their presence.

*Priya Mohandoss*





# Kinglake LANDCARE

## SUMMERTIME

Kinglake district is the traditional land of the Taungurung and Wurundjeri people of the Kulin Nation. Biderap is the dry summer season in January/February. Unlike our imported concept of four seasons, Kulin Nation's seven seasons reflect movement of the stars, changing weather, and the life cycle of plants and animals developed over many thousands of years.

## BIODIVERSITY IN KINGLAKE RANGES

Our stated aim at KLG is to protect and enhance the natural landscapes of Kinglake district. We also often talk about maintaining biodiversity ie the biological diversity of the variety of life forms: the different plants, animals, and micro organisms, the genes they contain and the ecosystems they form and is usually considered at three levels of genetic, species, and ecosystem diversity – so what does this process of ecological restoration mean for us?

It means we often try to recreate the natural structure and re-establish the crucial functional relationships in the community by applying science based facts and practices to overcome problems which can include increasing species diversity by planting rare or endangered species, tree planting, installing nestboxes to restore fauna habitat, and reducing pest plants and animals - which is what we try to do locally.

Monitoring our planting and management of

remnant vegetation often demonstrates positive regeneration of rare and endangered species (like the Rosy Hyacinth Orchid pictured) restoring some of the lost balance caused by our human interaction especially since white settlement.

## ACTIVITIES JUST GONE

In January we held a nestbox construction demo as part of our continuing "Boxes for Birds: a Kinglake community nest box project" on members' properties and public reserves.

A great Talk on Ants by presenter Ron Litjens at Yea Butter factory in December that was hosted by Yea River Landcare Group.

## COMING UP

Clean Up Australia Day in March (details below). No other programmed activity for February, but, we may email impromptu events to you if on our mailing list as they are required.

Planning National Tree Day plantings in July, and an Autumn work activity at the Koala Browse area between KRNH and No 2 Creek.

## GET OUR FREE BOOKLET

'Caring for Your Patch' covering backyard garden design, food growing, plant selection, weed and pest animal management and more, is available from Kinglake Library, KRNH, Kinglake Heritage Centre, local garden suppliers, Landcare events, some local shops and servos, and online from <https://ugln.net/about/resources/>. On that site you can also locate detailed vegetation reports on selected local roads.



*Endangered Rosy Hyacinth Orchid at Kinglake West.*

## MEMBERSHIP BENEFITS

New members can contact Secretary John Stewart on 0419 858504 or [johnstewart@live.com](mailto:johnstewart@live.com) to join for \$16 per year. Alternatively, you can be added to our free "friends" mailing list for notification of events.

*Roger Cook, President  
Kinglake Landcare Group*

## Next meeting

7.30pm Monday 17 February upstairs at Kinglake Memorial Reserve Hall. All welcome.

## Next events

Clean Up Australia Day at Wallaby Springs Reserve Sunday 2 March 10-12 then lunch and possibly nest box activity as well.

Contact Chris Cobern on 0413 855490.



Photo: Steve Shattuck, CC BY 2.0 <<https://creativecommons.org/licenses/by/2.0/>>, via Wikimedia Commons

**F**ebbruary is a month that brings a mixed bag of things to do and even with the hot weather, there are jobs that can be done.

Watering needs to be regular, especially after the hot dry days we have had in January, as the soil dries out quicker.

Pests will be about and aphids can quickly ruin leafy vegies and they need to be managed effectively.

Other jobs to do

- This is the last month to effectively spray blackberries before the cooler weather slows their growth
- Annuals and perennials need pruning or removing. If there are dead annuals or perennials, remove them and compost them.
- If you have pots that have dried out, dunk them in water until the bubbling stops and then move to a shadier spot.
- Mulch vulnerable spots to protect plants from the heat.
- By now, the soil will have dried out even though there has been some rain prior and regular watering is needed. It is useful to use a liquid fertiliser every fortnight in the vegie garden. Tomatoes need regular watering to prevent Blossom End Rot, which results from the plant not being able to take in the nutrients needed due to irregular watering.
- This is the perfect month to take semi hardwood cuttings of plants like salvias, geraniums, pelargoniums and this month will be the last chance to do daphne, camellias and buddleia. Use the new

wood which is a light green colour and dip into honey. Geraniums and Salvias can be put in a loose mix without any dipping. These cuttings need to be placed somewhere where they don't dry out, but have warmth. A shaded potting shed works well. Take the cuttings on a cloudy or cool day.

- Pyrethrum is good for most pests. Managing insect pests also helps to manage diseases that they can bring, especially viruses.
- This is also a good time to replant beans, peas, leafy green veggies and brassicas.
- This is the time to work on your garden tools, sharpening and cleaning secateurs, sharpening the end of spades and oiling the wooden handles of your other tools. Autumn isn't far away and good preparation means your work will be easier for pruning and digging in the next few weeks.

**Beating The Bite**

Summer in the garden can make life for gardeners very uncomfortable. It is the time when we can get bitten from all sides, whether it is from bees, wasps, ants, mosquitoes, scorpions ( yes we have them in Kinglake and I have been stung by one, and it's not nice) and March Flies which show up in the summer months.

Out of this lot, the Jack Jumper Ant can be a major problem.

Its bite is a burning sensation and it can cause anaphylaxis, which has proven fatal in the past.

For the lucky few, a bite causes no issues

but unfortunately many gardeners and outdoor enthusiasts are bitten and the reactions can be problematic. Usually bites result in a reaction with swelling and blisters that can keep getting larger to impact movement of joints if the bite is near knees, ankles, hands and elbows.

The red swelling can last for a few days. If the blisters pop, there could well be an infection needing antibiotics.

It is useful to draw a line around the swelling first about half an hour after being bitten then a couple of hours if it keeps swelling so when you do need to see your doctor, they can see the extent of the swelling. A lump that is about 5mm is normal, but if the swelling increases in size, becomes blistered and if you feel unwell then you should contact your doctor for advice as soon as possible.

A bite is serious if you experience this reaction but cramping, severe pain, an ulcer at the site and if your breathing and talking is becoming difficult, it is very important to seek medical attention and if breathing becomes more restricted, call an ambulance. Another good contact is Nurse On Call 1300 606 024 if you have any concerns.

Initial treatment for Jack Jumper bites is to use a pack of frozen peas on the site to help reduce some of the inflammation, take an antihistamine and apply a cortisone cream to help with the itching. Other remedies to help with the itching is a paste of bicarb soda or dab some vinegar on the bite as long as the blisters haven't developed.

If you have had a bad reaction to a



previous insect bites then it is most likely you could have the same response to a Jack Jumper bite.

Jack Jumper Ants live all along the east coast of Australia and in Tasmania. They belong to the group *Myrmecia* which also includes the Bull Dog Ants, the large black/ grey ones which also have a nasty bite and are bigger, 15 -20 mm long whereas the Jack Jumpers are 10 -15 mm long.

Unlike the bull ants, jack jumpers show jerky, jumping movements. They have a black body with orange/brown jaws and pincers. As both come from the same family, it is no wonder that they are equally problematic.

Jack Jumpers live underground and can establish large mounds which look like fine gravel. Their nests have several entrances. The nests are usually found near or under rocks, logs and on dry flat ground.

The last 4 years have been quite wet in Kinglake and this kept the ants in line but when the sun comes out and temperature warms, they move aggressively, jumping along often alone. It is when the weather warms up that they move aggressively and they are solitary. This summer has been drier and hotter than the previous ones, so all the ants are active.

You would think that gardening with these ants is going to be impossible but all is not lost. We need to have a strategy. This involves good planning and working with the weather.

Some suggestions are:

- Check out your garden areas for nests which are very distinctive. Take care moving any logs and use a long handled shovel to dislodge any logs or rocks so there is distance between you and any active ants in the area.
- Check out your garden areas for nests which are very distinctive. Take care moving any logs and use a long handled shovel to dislodge any logs or rocks so there is distance between you and any active ants in the area.
- If you need to weed an area or do some pruning, start early in the morning before the heat of the day as ants are more likely to be around with the warmth. Wear leather gloves, use long handled tools and avoid kneeling.
- I spray my boots with surface spray so it deters ants crawling on them and therefore less likely to be bitten above the boot line.
- Use tools with long handles like a long handled hoe which is good for weeding and if you do need to get stuck further

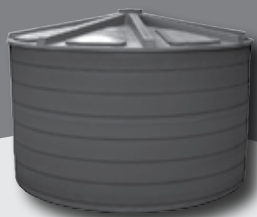
into a stubborn weed, a long handled MiHoe will do the job. Forking an area also loosens the weeds to make their removal quick and easy.

- Try to avoid kneeling down and bend from the waist using your knees. It's a practice I have been using for years and has helped me avoid being bitten.
- If you have a pile of weeds it is best to fork them into a barrow rather than carry them in your arms. I was bitten on my side by a bull ant and had to give up gardening for the day after taking medication for the bite to prevent anaphylaxis.
- Leather gloves are a must for summer gardening. Some gloves can be quite cumbersome to work in but you can get leather gloves made from goat hide which is more flexible and equally as protective.

Weeds won't go away, so limit your time doing this job. A bit of weeding here and there will still help you maintain the garden to some degree and gardeners can be obsessive, but it is OK for the garden to have weeds if it means you are safe.

When the weather cools down then you can easily catch up with a degree of safety but still always be aware of problematic areas in the garden. I know where the trouble spots are in my garden and I just have to patiently wait for cooler weather to sort out those weeds.

## ACCENT ON TANK CLEANING



*Have you had your water tank cleaned in the last 3 years?*

**NO!**

### HAVE YOU CONSIDERED THE HEALTH RISKS TO YOUR FAMILY?

*The build up of sludge, decaying leaves, animals or animal matter, which if left may cause harmful bacteria, leading to salmonella, legionella or gastric problems.*

**Water Tank Cleaning, Vacuuming and Repair Service with minimal water loss.**

HOWARD  
0407 684 910  
CALL FOR A FREE QUOTE NOW

## Alowyn Gardens

OPEN 10AM-5PM EVERY DAY



Call & collect for a great range of nursery plants ~ 9730 2400

Explore 7 acres of gardens

Enjoy the Maple courtyard for great coffee

Browse through our extensive nursery

1210 Melba Highway, Yarra Glen  
[www.alow yngardens.com.au](http://www.alow yngardens.com.au)



KITCHENS BY  
**LEONARD**  
INTERIORS  
Leaders in Quality design and construction

Steve Leonard 0418 335 475  
[info@leonardinteriors.com.au](mailto:info@leonardinteriors.com.au)

**DIRECT TO THE TRADE**  
CUSTOM BUILT KITCHENS, VANITIES, LAUNDRIES & ROBES  
FULL SERVICE or FLATPACK

**BUILDERS DISCOUNTS**  
[www.leonardinteriors.com.au](http://www.leonardinteriors.com.au)



# Water Wisdom

**As heatwaves arrive and summer bites, landholders turn their attention to the availability of water.**

It is a common topic of conversation in the Ranges and across our agricultural shire to talk about whether we are fortunate enough to have a bore on the property.

Then there's the questions of putting in dams, additional tanks, and the pumps and piping to ensure the most efficient delivery of this precious and vital resource.

No matter which option you decide to pursue, the fact is many new dams fail within the first few years due to poor construction techniques and choosing the wrong materials.

Then there's the sheer cost of sinking a bore, only to find the resultant water supply is high in impurities.

The state's agricultural authorities are urging landholders to carefully do their homework – whether you are farming on a large property or enjoying a hobby farm or lifestyle living on smaller hectares.

Here we bring you some of their advice.

## **Take care sinking a bore**

Numerous bores are sunk across Victoria every year. Some generate good quantities of water, but others produce small amounts of water or water that is high in salt or other impurities.

Agriculture Victoria Land Management Extension Officer, Clem Sturmfels, says sinking a bore is expensive, so it's important landholders do their homework prior to engaging a drilling contractor.

"Landholders should review the depth,

yield and quality of water in their area before applying for a groundwater licence from the relevant water authority", he says.

Check out existing bores in your area to review the depth, yield and quality of water.

You can access the online interactive map, Visualising Victoria's Groundwater (VVG).

This map allows the user to zoom in to their farm or property and turn on various coloured layers which indicate the likely depth, yield and quality of water in the area.

The map is based on drillers' records of approximately 300,000 bores sunk over the last 130 years across Victoria, Mr Sturmfels said.

He said that while underground water exists across much of Victoria, it's depth, quality and yield varied enormously.

"The highly complex nature of Victoria's geology means the quantity, quality and yield of water can change within a very short distance".

For further information about accessing groundwater, visit the Department of Energy, Environment and Climate Action (DEECA) website.

## **Ask questions before upgrading farm water equipment**

There is currently a shortage of stock water across most of Victoria due to seasonal conditions, and this has sparked renewed interest in constructing farm dams, and the addition of pumps, bores, tanks, troughs and piping.

But, before bringing in the earthmoving

contractor, there are some important questions to be answered before constructing a new dam or adding water infrastructure or equipment to the property.

Agriculture Victoria Land Management Extension Officer, Clem Sturmfels, says before you start, determine how much water you need, will the dam hold water, will it fill most years, how big should it be, is there a good site for a spillway, do I need a permit or license, and what will it cost?

Longer, hotter summers and decreased cool season rainfall has meant many smaller dams built in previous years are drying up.

Lack of runoff, increased water consumption and evaporation contribute to this issue.

Many new dams built across Victoria are also failing within the first few years due to inappropriate materials or poor construction techniques.

As a result, farmers need a bigger catchment area to improve the chances of filling dams regularly.

At least 10 hectares of catchment for every megalitre of water stored in a dam is recommended. Runoff from nearby roads and tracks is an effective way of getting water, especially in a dry year.

Mr Sturmfels said a livestock dam should be as deep as your site will allow and have a minimal surface area to reduce evaporation. Consideration should be given to planning a key large dam to use for reticulating water to troughs across the

property, via gravity or pumps.

Allow a minimum spillway width of 5m. The spillway should end with a level spreader to ensure water leaves the dam in a thin wide sheet.

A gently sloping, well grassed area is essential for a safe and stable spillway. The spillway should have little or no slope with a flat cross-section.

The addition of a trickle flow pipe set below the spillway level will minimise ongoing maintenance.

Purchasing appropriately sized pumps, tanks, troughs and pipes is essential for providing the flow of water needed on a hot day.

Ensure the construction and design of troughs are not vulnerable to livestock damage and are easy to maintain.

A single inferior fitting in a farm pipeline could result in total system failure and loss of valuable water.

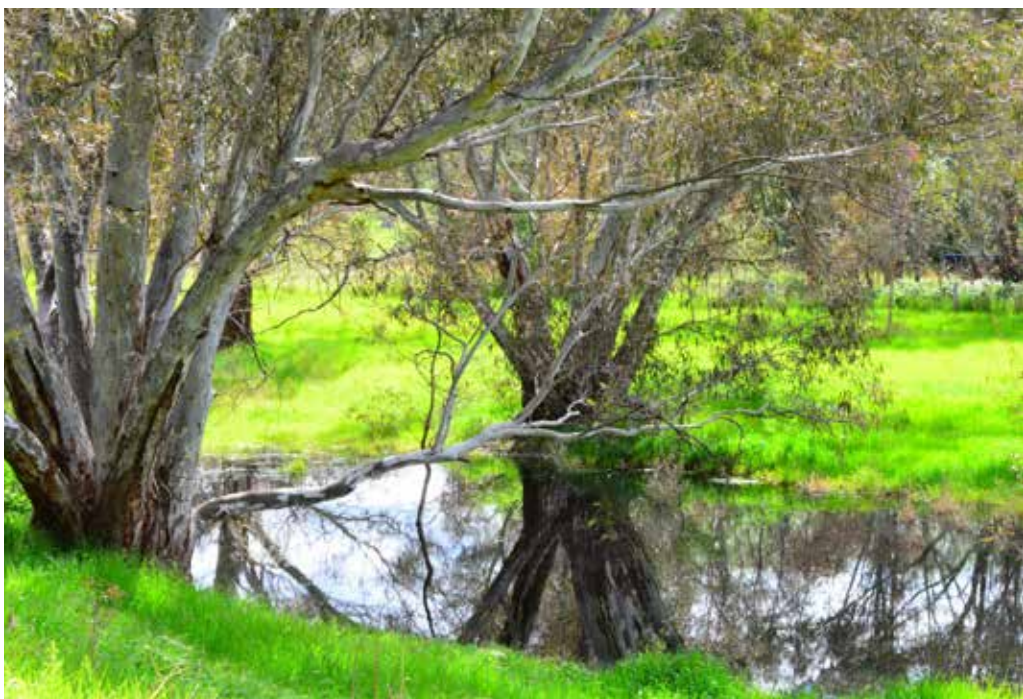
Reputable products will be marked with the manufacturer's details, date of manufacture, a relevant description and appropriate industry markings. For example, the markings on good quality rural polyethylene pipe will include PE80 or PE100, indicating the long-term strength of the materials.

When purchasing pipeline equipment and fittings, deal with a reputable supplier with a good track record, spare parts and after-sales service.

Selecting an experienced and reliable contractor, plus a few basic soil tests, will minimise the risk of failure.

Ensure your contractor has the appropriate skills, a good reputation and up-to-date equipment.

Ask the contractor for examples of their work and a guarantee.



A permit or license may be required to build, extend or repair a farm dam in Victoria. Contact your local rural water authority before commencing works.

For further information, visit the Agriculture Victoria website.

#### **Check for Algal Blooms**

Another regular chore when it comes to dams, troughs and other water sources is to check for signs of blue-green algae.

Algal blooms are more likely to occur during the warmer months.

Principal Veterinary Officer, Alison Lee, says blue-green algae, also known as cyanobacteria, are bacteria that can multiply rapidly under certain conditions.

It is more likely to occur when the water is warm and enriched with nutrients like phosphorus or nitrogen.

These algal blooms typically appear as

green paint-like surface scum in water, but they can also be reddish-purple or brown in colour. It can be difficult to tell blue-green algae from other less toxic algal species.

Blue-green algae may contain toxins that damage the liver or nervous system. Drinking contaminated water can kill livestock quickly and a number of livestock may be affected at the same time.

Animals exposed to affected water supplies may continue to die over a prolonged period. In milder cases, productivity losses may occur.

If a suspicious bloom is found, farmers should move their stock to an area on the property with a safe alternative water source.

Farmers should plan for managing water availability in the event that a blue-green algal bloom impacts their primary livestock drinking water supply. The plan should include calculating how much water livestock would require if the primary water supply was unsafe to drink and identifying additional alternative on-farm water supplies that could be utilised quickly.

In the medium-term, your plan could include improving water reticulation systems, considering options for treating blue-green algae affected water, or agisting your stock elsewhere until your farm water is safe again.

A range of useful information such as the Blue-green algae: options for livestock drinking water factsheet is available from the Blue-green algae page on the website: [Blue-green algae](#) | [Bluegreen algae in water](#) | [Water](#) | [Farm management](#) | [Agriculture Victoria](#)



*Algal blooms can also be reddish-purple or brown in colour.*

## Strathewen Primary School



**We're ready to kick off the new year with plenty of great plans for 2025.**

As we wish our senior students, Harriet, Logan and Sage, all the very best for the start of their secondary school adventures, we have welcomed a very enthusiastic group of incoming Foundation students, ready to enjoy school life.

Our grade 6 students celebrated their graduation event with the school community, presenting their farewell speeches at the end of year concert and they enjoyed a big night out with staff. Thank you to the Rotary Club of the Kinglake Ranges for their wonderful support across our local primary schools again this year, presenting a transition scholarship to a graduating student at each school.

Logan was a very proud recipient of the Rotary Scholarship at Strathewen this year. The scholarship program is funded through book sales at the regular Kinglake Market, so be sure to pop in and check out the stall next time you're there having a look around.

We have plenty to look forward to this term, with our whole school intensive swimming program kicking off in February, lots of music planned, a soccer coaching program coming up and some great learning extension and enrichment workshops locked in.

There's always plenty of work going on at our school during the holiday period. Over the summer break, we had a host of trades people visiting us, from arborists completing bushfire preparedness works, to a major vacation clean and our gardener having everything looking good and ready for our return.

With our wellbeing officer, Bronte, joining us for two days each week again this year, our lunchtime clubs have begun and we're fortunate to have her sharing her great animation skills in student workshops.

Our popular Breakfast Club continues, thanks to the School Breakfast Program. Early breakfast mornings allow for a very social start to the day and a great meal.

Our regular school lunch program is a hit too!

Over the summer, we managed to keep our Kitchen Garden thriving, and other than nibbling the celery tops and parsley, the rabbits haven't bothered us too much. We're fortunate to have parent volunteer, Isabella, sharing her skills and fostering an interest in food cultivation across all year levels. As well as enjoying an opportunity to prune, plant and propagate, it's great to see our students involved in harvesting and cooking fabulous fresh produce.

At S.P.S, Pre-Prep sessions for pre-schoolers run throughout the year. Feel free to join us on Thursday mornings from 9-11am. Our teacher, Maree, runs a play-based 'school' session for our visitors. If you're looking around at local schools and you'd like to see us in action, you're welcome to call in for chat and to meet our staff team. If you would like further information about our little school, feel free to give us a call on 9714 8278.

*Jane Hayward, Principal*

# Middle Kinglake Primary School

**W**elcome to 2025! After a well deserved break we are back on deck and excited for what the new year holds.

2024 ended in a whirlwind of celebrations, especially for the Grade 6s- Graduation, Final Fun Day at Funfields, morning teas with Ms Callander and the Grade 6 breakfast and special assembly on the last day. We wish them well as they head off to secondary school and look forward to catching up at the Grade 6 Year 7 Reunion.

Our end of year concert was a huge hit- an abridged version of A Christmas Carol by Charles Dickens. Congratulations to the main characters who did a great job learning their lines and performing like pros on the night. It was so great to see everyone on stage, brimming with confidence and having a go. A huge thank you to Tess for her organisation and expertise...it is not easy to pull off a concert event, and this one was so enjoyable. Some feedback from a parent the next day, 'the best concert ever, hope we can have another one next year.' Great job everyone!

During the last week of school, the Grade 6s went to Flying Tarts for morning tea with Ms Callander. The purpose of these outings was to reflect on their grade 6 year and discuss the highlights, what can be done differently, advice for future Grade 6s and concerns about secondary school. I thoroughly enjoy spending time with these students and congratulate them on the way they reflect and offer their thoughts. Some of the highlights were the friends they'd made, the staff at MKPS, Grade 3-6 camp, the excursion to A Christmas Carol performance in the city and the installation of the new Ga-Ga Pit. They expressed gratefulness and maturity as they shared their excitement and trepidation about heading off to high school.

At the final assembly students presented an Acrostic poem



*Above: Grade 6 Morning Teas  
Above right: Final Assembly  
Below: EOY Concert  
Right: Grade 6 Graduation*



we had collaborated together, sharing their thoughts about MKPS. We think it perfectly sums up our school-

- M**arvellous, magic,
- M**agnificent place to be
- I**nclusive of everyone
- D**ress up days
- D**ifferent people and friends
- L**oving the variety of activities and learning
- E**veryone is welcome
- K**indness everywhere
- I**ntelligent and innovative kids
- N**atasha got married
- G**oing on excursions and camps
- L**ots of learning and laughter
- A**ctivities that help us learn
- K**ingdom for all students
- E**xhausting year of fun
- P**roud of our school
- S**miles on all the faces

2025 is shaping up to be busy and engaging. We are loving watching the new preps and their families settle into MKPS life. Everyone is enjoying their new classrooms and teachers and returning to school routines after the break. Swimming starts mid February and we are hoping for great weather! We wish Miss Platt all the best as she heads off to have her baby. We are excited to share the exciting things happening at our school through the Mountain Monthly each month.

Enrolments are always open at MKPS and we look forward to meeting new families. We offer an engaging and individualised Literacy and Numeracy curriculum plus

many specialist curriculum subjects including Art, Music, Library, Social & Emotional Learning, Auslan, Health & PE and STEM. We have a huge focus on Sustainability, including the Stephanie Alexander Kitchen Garden Program. Students are involved in gardening, cooking and learning about environmental issues. If you would like more information about our fabulous school, please don't hesitate to contact us. Call us to schedule a personalised tour. Check out our website <https://www.mkps.vic.edu.au> or 'like' our Facebook page for up to date happenings.

*Meagan Callander, Principal*

# Kinglake Football/Netball Club



## From the Coaches

### Football

**As we prepare for the 2025 season, there is an incredible buzz around the Kinglake Football Netball Club. Not only are we gearing up for a competitive season, but we are also preparing to kick off a year of incredible significance — our 100th anniversary!**

It's a time to celebrate the club's rich history and look forward to a bright future.

Our pre-season has been going incredibly well. The players have been putting in the hard work at training, and we've seen great energy and commitment across the board. The coaching staff is extremely pleased with the attitude and effort on display, and we're confident that it will set the foundation for a successful year.

The squad has been building strong chemistry, and we're already starting to see the results of our structured sessions, which focus on skill development, fitness, and team dynamics.

In addition to the hard work from our returning players, we've made some exciting new additions to the team. Our recruitment for 2025 has brought in some talented players who we believe will add depth and versatility to our squad. These recruits are hungry for success and eager to contribute to what will be an exciting and pivotal year for the club. Their fresh energy and commitment have already made a positive impact, and we're looking forward to seeing them in action on the field.



We are also gearing up for our centenary celebrations. As the club turns 100 next year, we are filled with pride for everything Kinglake Football Club has achieved over the decades. The history, the community, and the passionate supporters are what make this club truly special. We can't wait to share these celebrations with all of you, and we're determined to make this a season to remember both on and off the field.

We are focused on building on the progress we made last season, pushing for improvement, and striving for success as we enter this landmark year.

Bring on the 2025 season! Let's make it a year to remember.

Go Lakers

*Dave Florance*  
Head Football Coach

### Netball

Kinglake Netball 2025 is off to

a strong start with numbers increasing at each training. Pre-season training kicked off in November 2024 with a break over the Christmas period and recommenced in mid-January.

Trainings are weekly on Thursday nights with Trials set for 20 and 27 February, allowing plenty of time for teams to train prior to round 1 in April.

Kinglake Netball for 2025 is looking exciting with new and returning faces at the club. After a few years away in the GVNLL working with developing 17s I am looking forward to be returning as a full time coach and player to bring new training and style of plays to the squad.

In 2024 Kinglake was able to push for 3 teams in the NNL with Division 3 (finishing 4th and playing in the semi Finals), Division 7 (finishing 6th) and Division 10 (Finishing Premiers). Kinglake has also

continued with good squad numbers with 3 teams in the NNL Summer competition with teams in Division 1, 6 and 9. Both Kinglake 2s and 3s are looking likely to play in Finals towards the end of February.

Moving forward in 2025 the goal has been to push for 3 solid teams in the hopes to Field a 4th side. With returning A grade players such as Jacinta Parkes, Billie Cvitjetic and Nakita Meade the versatility of our senior side is looking promising. We are excited to be holding onto our 2024 Kinglake 3s Premier players and welcoming back a majority of our last year squad. Recruiting is also looking steady with more players reaching out for information about Kinglake.

Other key points of contacts include Olivia Turner Dickson the 2024 NNL Div 10 League Best and Fairest who will be taking on the role as Netball coordinator, Matthew McAllister 2024 NNL Div 10 Premiership coach will be stepping up to assist Latoya Wards with Kinglake 1s and we welcome back Nathan Pappin as assistant coach for Kinglake 2s.

For more information about Kinglake Netball you can contact Latoya Wards via Facebook messenger or reach out to Kinglake Secretary. All levels of netball are welcome including all fitness levels. Trainings are designed to support players to improve their fitness and skills while promoting a social and friendly environment to exercise.

*Latoya Wards*  
2025 Head Netball coach



# Kinglake Junior Football Club

**We hope everyone has had an enjoyable holiday period and a chance to take some time to relax and catch up with family and friends.**

During November and December, we had an extraordinary turnout of players at our pre-season training sessions. From all reports the kids had an awesome time training with their coaches and mates. Following the pre-season training sessions we've had pizza nights and end-of-year BBQs, which were enjoyed by players and parents alike.

Our pre-season participation has been strong in all age groups. We are on track to field four teams this year; Under 9s, Under 11s, Under 13s and Under 16s. 2025 will be one of the biggest years ever for the Kinglake Junior Football Club!

There are still a few spare spots on each team for 2025. If you are interested in playing or would like to come and try a training session, please get in contact.

Since our last update we have made some impressive coaching announcements.

Matt Honey will coach our Under 9s team. Matt previously played for the Eltham Panthers and represented the Northern Knights as a junior. Matt will be a fantastic mentor to our youngest players and help them build their skills, learn, and have fun.

Mark will coach our Under 11s team. Mark was previously our Assistant Coach for the Under 10's team and played junior footy for Craigieburn. Mark's focus is on skills, fitness and fun, and continuing the improvement we saw last season in the Under 10's team.

Rob Abboushi will coach our Under 13s team. Rob played more than 150 senior games and has three years coaching experience under his belt. Rob did an excellent job coaching our Under 10's team last season and will be a great asset to the Under 13s team this year.

Mick Egan will join us as Director of Coaching for 2025. Mick brings a wealth of knowledge and experience having previously played over 100 games for the Footscray Bulldogs in the VFL and having represented Victoria. Mick previously coached Assumption College and the Kinglake seniors for 10 seasons. Mick will be an incredible asset to the club, working closely with the coaches to help develop our players.

Our buildup to the 2025 season continues this month. Training will resume as follows:

Under 9s, 11s and 13s will recommence on

Thursday 6 February at 5pm at Kinglake West Reserve.

Under 16s date and time will be advised shortly. Keep an eye on our Facebook page, and lookout for our emails for further updates.

Auskick will also run again this year for younger children aged 4-7. If you are interested in your child joining in, please contact Rebecca on 0423 629 241 for more information.

Again, if you are interested in playing or training with us, please get in contact. We are a family friendly football club and joining is a great way for kids to make new mates in the area and for families to meet other families. Our values of Team Building, Leadership and Community are at the heart of what we do.

Facebook: @Kinglakejuniorfootballclub,  
Email: kinglakejfc@gmail.com



*Under 16's pre-season training session at Kinglake Football Ground*



*End of season BBQ for Under 9s, 11s, and 13s at Kinglake West Reserve*



*Under 11s during a pre-season training session at Kinglake West Reserve*



Dam construction and repair  
Road construction and repair  
Land clearing  
Site cuts  
Fire prevention works



Call for a quote today 0473 525 695



# Simply



# Timber & Roofing

"No problems, just solutions"

# 03 5743 0000

• General Hardware supplies • Roofing & Timber supplies

*Your Local Hardware Specialist'*

906 Whittlesea-Kinglake Road, Pheasant Creek

# Plan For Emergencies

## Do you have a plan ready in the event of a flood, fire or storm?

Our emergency services constantly remind residents that the weather never takes a holiday and in recent times, it can be hard to predict what might come our way.

Murrindindi Shire Council is encouraging all residents to be proactive in their emergency preparedness by developing a clear emergency plan, having a contact list and staying informed through reliable local channels.

Spending 10 minutes today to create a plan can help you act quickly and effectively during an emergency. Talk to the people in your household about potential emergency scenarios and outline clear instructions for everyone to follow.

Make sure to include:

- where you will go
- how you will contact each other
- essential items (e.g. medications, important documents, emergency kit)

The council says that in the event of an emergency, knowing the right authority to contact is crucial to accessing appropriate and timely help. Research your area and keep a list of agencies in an easy to access place. Some useful contacts include:

- Emergency services, such as Police, Fire and Ambulance: 000
- State Emergency Service (SES) for

floods, storms and earthquakes: 132 500

- VicEmergency Hotline for bushfire information: 1800 226 226

Emergencies can happen at any time, and being prepared includes knowing where to go for accurate information. Local broadcasters play a key role in providing accurate and timely emergency advice and warnings.

Make sure you have access to a battery or car powered radio to listen to UGFM and ABC Radio. You can follow both of these sources on Facebook. Find a list of local emergency contacts and broadcasters at [murrindindi.vic.gov.au/EmergencyContacts](http://murrindindi.vic.gov.au/EmergencyContacts)

You can download the VicEmergency app on your mobile or tablet device for updates on conditions in your area. For more information and how to download the app, visit [murrindindi.vic.gov.au/prepareforfireseason](http://murrindindi.vic.gov.au/prepareforfireseason)

Council also encourages residents to stay connected with their local Emergency Service Agencies like SES and CFA, which offer support and information tailored to the specific needs of local communities.

You can find state agency and local branch pages on most social media platforms. Find your local SES branch by visiting [www.ses.vic.gov.au/about-us/contact-us](http://www.ses.vic.gov.au/about-us/contact-us) and your local CFA branch by visiting [cfa.vic.gov.au/about-us/your-cfa/where-we-are](http://cfa.vic.gov.au/about-us/your-cfa/where-we-are)

Identifying your communication channels

and knowing how to receive emergency warnings and monitor weather conditions is critical. In a life-threatening event, call 000. For flood or storm assistance, call SES at 132 500.

To prepare, have an emergency kit that includes essentials like food, water, medications, and first aid supplies. Know where any items are that you might need to take if you need to leave quickly.

Maintain a water supply to ensure you and your pets stay hydrated. If you have a backup generator, store spare fuel in a safe location away from buildings and your house.

Consider getting a battery-powered or solar-powered radio and test it every couple of months. If you prefer not to buy a radio, you can stream most radio stations from your phone if a connection is available, or preset one of your car's radio stations to your local designated broadcaster, such as UGFM and ABC Radio.

If possible, have a charged CB radio or satellite phone on hand, as it can be very useful if mobile communications are lost.

For more information on emergency preparedness, assistance in creating a plan, and more, visit [ses.vic.gov.au](http://ses.vic.gov.au)

Check in with your neighbours and friends, share this information, and encourage them to do the same.

For more information about safety and emergencies visit [murrindindi.vic.gov.au/safetyandemergencies](http://murrindindi.vic.gov.au/safetyandemergencies)

## Watch for heating hay

**It's that time of the year when paddocks are awash with rolls, bales and stacks of hay, but every season there are also hay stacks that spontaneously combust.**

Agriculture Victoria says this can occur in single moist bales or in a stack of any size.

Once the hay has been stacked it's important to regularly monitor it for heating and act quickly.

AV Extension Officer, Michael Jolliffe, says that unfortunately, even with technological advances in machinery for harvesting conserved fodder, there is still nothing cost effective to help monitor the internal temperatures of haystacks.

So, it's back to some very simple techniques.

### Watch for signs of heating

Steam condensation on the shed roof, mould growth, acrid fumes and hot, humid air at the top of the stack are all good indicators.

When building stacks with suspect wet hay, stack the bales loosely to allow air movement and spread the stack over a wider area to reduce heat build-up.

Most heating will occur over the first 1 or 2 weeks but has been known to reach 'flash point' up to 8 weeks after baling.

### Determine the stack temperature?

Stack temperature can be measured using a crowbar inserted as deep as possible into the stack and left for 2 hours. After 2 hours, the crowbar can be removed and felt by hand to give you a rough guide of the internal stack temperatures.

The temperature of the bale is up to about 50°C if you can hold the crowbar without discomfort. It is up to 60°C if the bar can be held for a short time only and up to 70°C if the bar can only be touched briefly. If you

can't hold the bar, temperature is above 70°C and fire is a real possibility.

### What can be done if the stack heats to danger levels?

If a stack starts to get 'dangerously hot' pull it apart as quickly as possible.

Be aware that as the bales are pulled out of the stack, especially in a tightly built stack, oxygen will now get access to the hot spot and potentially cause ignition.

Make sure that water is readily available and suitably qualified people able to assist in fire suppression if required.

### Safety Warning!

Avoid walking on the stack as the extremely high temperatures may have charred the centre of it. Any extra weight on the stack may cause the stack to collapse into the dangerously hot centre and cause serious injury.

The Country Fire Authority website has good information about hay fire risk. Search 'hay fires' at [www.cfa.vic.gov.au/](http://www.cfa.vic.gov.au/)

## Kinglake SES

**A**s we said goodbye to 2024 the Unit held its annual Christmas break up party where awards for service were presented by the Operations Manager for Eastern Metro Region ,Diana Batley. A combined service of 90 years, awards to the following members were handed out:

- Leanne Klammer 25yrs
- Andrew Derwent 25yrs
- Des Deas 20 yrs
- Alex Klammer 10 yrs  
(Not in Photo)
- Genine Cowell 5 yrs
- Peter Mercer 5 yrs



Due to the impact of Covid a number of these presentations had been delayed, but we are now up to date, and it is important to formally acknowledge and celebrate the contribution to our community from these individuals.

A fun night was had by all.

### Monthly Activities

In the last 2 months we have had 20 Requests For Assistance spread over the following areas:  
Road Accidents 7  
Trees on Roads 10  
Assist Ambulance 2  
Domestic Rescue 1

With the 7 Road Accidents our Kinglake Ranges weather has played a part, either early morning sun, late afternoon sun and in the fog. We ask all our road users to drive to the conditions and remember that when you approach Red and Blue flashing lights, by law you have to slow down to 40 kph.

In our area the SES, CFA and CERT are all volunteers and we along with the other emergency agencies deserve to be as safe as possible when working at these events.

In December the Unit successfully completed our Road Crash Rescue Assessment, which means that we are deemed competent

within Victoria to respond for the next 3 years.

### New Members

We are very fortunate that 4 people within our community have applied to join us in the last two months so we say welcome to Evelyn, Troy, David and our Junior member Amber.

All have started on their training journey to become operational members.

Juniors can join from the age of 15 yrs, and once they complete the required training will be able to attend certain Jobs, they cannot attend Road Accidents until they are 18 yrs old.

### WELCOME TO 2025

Kinglake SES is only a small unit and is always looking for new members. Training and safety gear is provided so if this is something that you are interested in, then come down to the unit, we train every Monday night from 7.30pm to 9.30pm except public holidays or contact our Unit Controller Leanne Klammer 0428 110 773, Deputy Controllers Andrew Derwent 0419 581 520, or Wayne Leech 0407 400 465 and have a chat, you might find it a good way to meet people in our community and learn new skills at the same time.

# Kinglake West CFA

**“When Lightning Strikes: A Team Effort”**

**By Kinglake West Fire Brigade**

**When lightning strikes a tree deep in the bush, what starts as a small incident can quickly become a bigger challenge.**

At 22:03, we were paged to a grass and scrub fire in the Humevale area, following a brief storm that had passed earlier in the evening. A glowing red tree, smouldering from a lightning strike, was visible in a remote and dense part of the bush.

The location was inaccessible by vehicle, and with night already falling, hiking in would have been both risky and impractical, especially with the ground still wet from the storm.

We returned the next morning at first light, ready to assess and tackle the situation. As we hiked through the dense Humevale bush, the smoke became visible from a distance. What had initially seemed like a small incident - a visible smoking tree - turned out to be more complicated. The tree was still smouldering, with a large section already burnt and lying on the damp ground. The rough terrain and remote location made it clear that preventing any potential fire from spreading would require a coordinated effort to manage any flare-ups from the smouldering area.

We moved quickly. Four of us, including the landowner, hiked in to evaluate the situation and figure out what resources we would need. As we got closer, it became clear just how isolated the site was, and that managing any potential fire spread with limited resources would be challenging.

With active points of ignition still present, we radioed back to the Kinglake West Officer in Charge for additional support. Two CFA members—one from Kinglake and one from Whittlesea—remained on-site to monitor the tree and prevent flare-ups, while a member from Kinglake West and the landowner hiked out to present site photos. Mobile coverage in the area was very poor.

Reinforcements arrived soon after—two FFMV members and another CFA crew member from Kinglake, bringing the necessary equipment to fell the tree and handle any further flare-ups. Felling a smouldering tree in the middle of the bush is routine for FFMV, but once the tree was down, the work wasn't over.

Despite using Napsacks and Rakhos to suppress the smouldering area, some spots resisted full containment. At that point, we called in helicopter support for a water drop. The water drop proved to be crucial, quickly extinguishing the remaining hotspots and ensuring the incident was fully contained.

This operation was a great example of teamwork in action. From the ground crew to the aerial support teams, everyone worked together seamlessly. Special thanks to Helitack 365, Firebird 308, the CFA crews from Kinglake West, Kinglake, and Whittlesea, FFMV Toolangi, and CFA Air Support. Their expertise and collaboration were vital in bringing the incident under control.

Operations like this remind us that in tough conditions, teamwork is what makes all the difference. In the end, it's not just about fighting fires—it's about protecting our communities, preserving our landscapes, and safeguarding our bushland.





Whittlesea

**HARDWARE**  
TIMBER & BUILDING SUPPLIES

**FIREWOOD**  
**4M<sup>3</sup> FOR \$880**

**Includes Delivery!**

\*Excludes Yarra Glen, Healesville,  
Yea and Alexandra\*

ph: 9716 2226

[www.whittleseahardware.com](http://www.whittleseahardware.com)

**TIMBER**

- ✓ ROOF TRUSSES
- ✓ HOUSE LOTS
- ✓ TREATED PINE
- ✓ DECKING (ALL TYPES)



Get the right stuff ✓

# BUSINESS & TRADES GUIDE

## AUTOMOTIVE

**KINGLAKE RANGES**



**SERVICE & REPAIRS**

- Automotive
- Small Engine
- Servicing & Maintenance
- Log book Service
- Brakes and Clutches
- Auto Electrical
- Restoration

CALL STEVE

**0418 515 506**

## AUTOMOTIVE

**PARKER'S**  
**AUTO PLUS**

*The one stop shop, for all of your automotive needs.*

Factory 2, 5 Laurel Street,  
Whittlesea, VIC 3757

(t) 9716 2010

(f) 9716 2094

e) [workshop@parkerautoplus.com.au](mailto:workshop@parkerautoplus.com.au)

- CARS ◦ TRUCKS ◦ TRAILERS ◦ MARINE ◦
- EARTHMOVING ◦ AGRICULTURE ◦

## AUTOMOTIVE

**Kinglake Exhaust Centre**  
*Specialising in Custom Systems*

**Harry Southall**  
**0417 363 762**

## ADVERTISE - SUPPORT LOCAL

**KEEP IT LOCAL**

**SUPPORT LOCAL BUSINESSES**

By supporting our local businesses and communities we improve our local economy

**SHOP LOCAL** **SUPPORT LOCAL BUSINESS**

Reach over 1,500 people each month. Advertise your business in the *Mountain Monthly* – a not-for-profit community-owned monthly magazine

**For advertising enquiries phone**  
**Neesha 0493 740 926**

## BIN HIRE

### Barber's Bin Hire & Recycling

Walk in bins 6, 8, 12, 15 & 20 cubic metre bins  
Available 7 days a week



**Call George • 0409 677 687**  
Location – Arthurs Creek

## CONCRETING

### FLEETWOOD CONCRETING

*If it's concrete you need, phone Mac!*  
any style – any size

- Driveways • Paths • Slabs • Foundations
- Steps • Crossovers
- Plain • Coloured • Stencil • Slate
- or • Exposed Aggregate

All Excavations & Concrete Cutting Service

ph/fax 5965 2486 or 0418 534 973

## BUILDERS



**MATTADOR**  
BUILDING &  
CONSTRUCTION

**0400 357 408**

*Builders of Quality*  
mattadorbuild@outlook.com

ABN 34616903667 ACN 616903667 • Registered Building Practitioner DB-U 45581 • MBAV REG NO 321759



## EARTHWORKS

### J.R.'s EARTHWORKS

ABN 43 652 481 089

EMAIL: info@jrsearthworks.com.au  
WEB: www.jrsearthworks.com.au

EARTHMOVING | MACHINERY | SUPPLIERS

- House sites • Shed sites
- Tank sites • Driveways
- Trenching /power /phone/water
- Postholes 200mm to 600mm
- Drainage • Landscaping
- Bobcat • Excavators
- Truck & trailer
- Dozer • Grader
- Roller • Water truck
- Tractor

**Damien 0418 506 130**

FOR ALL YOUR EARTHWORKS REQUIREMENTS

## CARPENTRY

• BUILDING MAINTENANCE  
• RENOVATIONS  
• PLASTERING  
• TILING  
• CARPENTRY

**VazBuilt**  
**0414 085 247**  
vazbuilt@icloud.com

## ELECTRICAL SERVICES

NEW TECHNOLOGIES  
OLD-FASHIONED SERVICE **0448 810 715**

- Electrical
- Solar and Batteries
- Data

**Kinglake Electrical Services**  
REC: 17901

## CONCRETING

**WHEELER & SONS CONSTRUCTION**  
WHEN QUALITY MATTERS

BUILDING • CONSTRUCTION • CONCRETING  
LANDSCAPING • RETAINING WALLS

RYAN 0421 435 766 | RYAN.NJWHEELER@GMAIL.COM

ABN 64629480316

## ELECTRICAL SERVICES

• PLEASE TRY LOCAL FIRST •

**GARY FRANCIS** rec 6576  
**ELECTRICAL**

All types of electrical work  
FREE QUOTES • NO JOB TOO SMALL

**0438 001 302**  
KINGLAKE RESIDENT • 24/7 ALWAYS THERE

SWITCHBOARDS • TRENCHING  
GENERATOR SWITCHES

## ENGINEERING SERVICES



**MANUFACTURE | MAINTAIN | REPAIR**

- WELDING OF STRUCTURAL STEEL, ALUMINIUM AND STAINLESS
- TRUCK & UTE TRAYS
- FULLY EQUIPPED WORKSHOP

IF YOU NEED ANYTHING MADE OUT OF METAL, YOU GIVE BOB A RING!

📞 BOB: 0428 300 357  
✉️ BURNISMOB56@BIGPOND.COM

On Site Welding Available

SERVICING THE KINGLAKE RANGES & BEYOND FOR OVER 30 YEARS

FOLD | BEND | CUT | MACHINE | TURN | MILL

## GAS SUPPLIES



For all your domestic gas requirements contact Barry

**5786 2197**  
kinglakegas@gmail.com

8.5kg BBQ gas bottles  
Home delivered

## GARDEN & FARM SUPPLIES



**5786 2171 | 3 Oldfield Road, Kinglake West**  
firewood • pet food • stockfeed • mulch • soil • crushed rock  
• nursery • garden supplies | Delivery available

## METAL / SCRAP

# SCRAP METAL BUYERS

- COPPER
- BRASS
- STAINLESS
- ELECTRIC MOTORS
- ALUMINIUM
- RADIATORS
- BATTERIES
- CABLES

**9467 5505**  
20 CLEMENTS AVE  
**BUNDOORA**  
MON - FRI 7.30AM-4.30PM



United Metal Recycling

## GARDEN SERVICES & SUPPLIES



**Johnny SLASH**

- FIREBREAKS • PADDOCKS • GENERAL SLASHING

**0423 302 391**

## METAL FABRICATION



CUSTOM FABRICATIONS

- CNC PLASMA CUTTING SERVICE
- MILD, STAINLESS, ALU. UP TO 12MM
- BATCH CUTTING OR ONE OFFS
- GENERAL METAL FABRICATION
- QUICK TURNAROUND
- FREE LOCAL DELIVERY
- KINGLAKE BASED




CRAIG – 0409575846 CUTTING@OEEC.NET.AU

## GAS SUPPLIES



**PHEASANT CREEK**  
GAS AND PROPERTY MAINTENANCE  
KINGLAKE

Your local gas supplier

Call Dan  
**0401 870 158**



**SUPAGAS**  
YES WE CAN!

APPROVED DEALER

This Supa Starter Pack ONLY AVAILABLE TO NEW CUSTOMERS  
**DOUBLE YOUR GAS!!**  
When you order 1 x 45kg gas bottle. Includes free delivery. Limited time only



Find us on Facebook | VISA | e mypos

## PAINTER / DECORATOR

*John Kyme*

Painter & Decorator

Specialising in all forms of Painting & Decorating

5780 2569 ah  
0418 564 851





**PAINTER / DECORATOR**



**Interior & Exterior  
Painting & Decorating**

Dulux Accredited and Member of Master Painting Australia  
Over 25 years of experience, Workmanship Warranty, Public Liability

We believe the key to quality painting is good preparation  
for the best result. We are here to service all customers  
looking to have the best quality of job.

**ON TIME PAINTING AUSTRALIA**  
Please Call KJ

**0402771175**

E: [info@ontimepaintingaustralia.com](mailto:info@ontimepaintingaustralia.com)  
[www.ontimepaintingaustralia.com](http://www.ontimepaintingaustralia.com)

**PEST CONTROL**



**HOME PEST  
SERVICES**

**Rick Shaw 0488 004 882**

**KINGLAKE LOCAL**

**Pre-purchase Inspections**

**Termite Management & Eradication**

**Ants, Spiders, Cockroaches, Wasps  
& Roof Rascals**

[www.homepestservices.com.au](http://www.homepestservices.com.au)

**PLASTERER**

**PLASTERING**

- New Homes
- Extensions & Renovations
- Kitchen & Bathroom Renovations
- Specialising in Restorations

**LOCAL  
TRADIE**

Contact: Peter  
5786 5591 or  
0417 558 727

**PDL BUILDING & MAINTENANCE**

**PLUMBING SERVICES**



- New Homes
- Septic Tanks
- Gas Works
- Sewer Jet
- Treatment Plants
- Sewerage Maintenance
- Rainwater Tanks & Pumps
- CCTV

CALL OUR FRIENDLY STAFF TODAY FOR A FREE QUOTE

Office: 5786 1498 M: 0400 806 095  
E: [accounts@kinglakeplumbing.com.au](mailto:accounts@kinglakeplumbing.com.au)  
W: [www.kinglakeplumbing.com.au](http://www.kinglakeplumbing.com.au)

**PLUMBING SERVICES**

**Call James  
0405 263 224**

**Licensed to Plumb**

Servicing all local areas  
Over 20 years experience  
Happy to assist with all your plumbing needs  
*Local, happy plumber  
providing the local community with good honest  
plumbing at local rates*

**PLUMBING SERVICES**

**Mountain Range Plumbing**

Kinglake Area  
Free Quotes  
All work guaranteed

**0418 506 130**  
Damien

**15 YEARS EXPERIENCE  
SPECIALIZING IN**

- Treatment Plants • Septic Systems
- Grey Water Systems • Sewers & Drainage
- Fire Services • Water Tank Installation • General Plumbing
- Domestic & Commercial

email: [info@mountainrangeplumbing.com.au](mailto:info@mountainrangeplumbing.com.au)  
[www.mountainrangeplumbing.com.au](http://www.mountainrangeplumbing.com.au)

## PLUMBING SERVICES



Licence No. 52096

### IRELANDS PLUMBING

For all your domestic water and waste water needs

- Plumbing and Maintenance
- Water Tanks and Filtration
- Irrigation Systems
- Treatment Plants and Septics

IRELANDSPUMBING.COM  
**0447 710 631**  
Find us on **facebook**

## SEPTIC TANK SERVICES

# wallace

## SEPTIC TANK CLEANING

TREATMENT PLANTS, PORTABLE TOILETS, PUMP PITS, HOLDING TANKS

**0490 390 158**  
wallaceseptictankcleaning@gmail.com

## RURAL SERVICES

# Maccas Rural Services

Anthony McMahon  
37 Thomson Lane  
Kinglake 3763  
p/f: 5786 1427  
m: 0409 143 237  
e: maccasmill@bigpond.com

Fencing  
Chainsaw Sharpening  
Slashing  
Tree Felling

## SEPTIC TANK SERVICES



### SEPTIC TANK CLEANING

Specialising in septic tank, treatment plant, grease trap, portable toilet cleaning and waste removal.

☎ 0418 303 761  
✉ gcsepticcleaning@gmail.com  
📍 Servicing the Yarra Valley and surrounding areas. 24/7 call-outs available.

## SECURITY DOORS / BLINDS



### Doreen Security Doors and Blinds

- Security Doors
- Plantation Shutters
- Roller Shutters
- Blinds

Servicing the northern suburbs and Kinglake for 15 years

Call for a FREE quote  
0431 867 359

## SEPTIC TANK SERVICES



# SEPTIC SERVICES

Specialising in

- Septic Tank, Treatment Plant Cleaning
- Commercial & Domestic Grease Trap removal
- Water Tank Cleaning

EPA Accredited

## Call Jeff 0421 764 072

## SECURITY SERVICES



Find us on **Facebook**

☎ Phone Nathan 0419 585 773  
✉ Email info@allprotectsecurity.com.au  
🌐 www.allprotectsecurity.com.au

- Intruder Alarm Systems
- CCTV Cameras
- Intercom Access Control
- Data & Networking
- Home Automation & Audio Visual

## WATER SUPPLIES

# Mt Robertson SPRING WATER



Kinglake Central  
Filtered Spring Water  
Domestic Water Cartage  
Fully Licensed  
David and Karin  
**0457 681 992**

**TREE SERVICES**



**MORGAN'S  
TREE SERVICES P/L**

- Tree pruning • Tree removal
- Chipping service
- Dead wood/dangerous limb removal
- **FREE QUOTE**

30 Years' experience • Fully insured  
Competitive rates • Local business

**Call Dayle on 0419 895 464**

**TREE SERVICES**



**UNLIMBITED  
TREE SERVICES**

- Trees Trimmed/Removed
- Stump Removal
- Chipper/Mulcher Service
- Fully Insured

For a free quote please call  
0407 804 472 or 0419 506 739  
Fax 5797 2641

Aaron Thomas      Neil Roberts  
www.unlimbitedtreeservices.com.au

**TREE SERVICES**

**Star Tree Services**  
**QUALIFIED ARBORISTS**


- Tree Removal    Tree Surgery & Pruning
- Consultations & Reports    Elm Leaf Beetle Control
- Mulch & Firewood Sales

**5783 3170**   *Free Quotes Full Insurance Cover*  
www.treeservices.com.au / mail@treeservices.com.au



**WATER BORES**

**WATER BORES BY**

 **North West Drilling**

*No nonsense, straight forward advice!*  
**Local business established 35 years plus**

Call Graham Brennan  
**Office 9436 1982 or 0409 362 289**  
email northwestdrilling@bigpond.com.au

# LOCAL BUSINESS DIRECTORY

Receive a FREE Local Business listing when you advertise with MM (normally \$19 per month)

## ACCOUNTANTS

ML Accounting Solutions 0438 778 303

## AUTOMOTIVE (CAR / MOTORCYCLE)

Kinglake Exhaust Centre - Harry 0417 363 762

Kinglake Ranges Service & Repair 0418 515 506

Parkers Auto Plus 9716 2010

Whittlesea Smash Repairs & Towing 9716 1303

## BANKS

Bendigo Bank – Kinglake 5786 1656

## BIN HIRE

Barbers Bin Hire 9714 8511 or 0409 677 687

## BUILDERS

Leonard Interiors 0418 335 475

Mattador Building & Construction 0400 357 408

## CAFES, BAKERY, FOOD & RESTAURANTS/CATERING

Cappa Rossi's Cafe 5786 1783

Songbird Cafe & Larder 5786 1275

## CARPENTRY

Vazbuilt 0414 085 247

## CONCRETE, STONE & BRICKLAYING SERVICES

Fleetwood Concreting 0418 534 973

Wheeler & Sons Construction 0421 435 766

## EARTHWORKS

Bulldozer Hire 0473 525 695

JR Earthworks Damien 0418 506 130

Sprocket Earthmoving 0437 550 333

## ELECTRICIANS & DATA SPECIALISTS

Gary Francis Electrical 0438 001 302

Kinglake Electrical Services Jason 0448 810 715

## ENGINEERING, DESIGN & WELDING

R & D Burns Engineering 0428 300 357

## FENCING

Maccas Rural Services 5786 1427 or 0409 143 237

## FINANCIAL SERVICES

NS Finance & Mortgages – Nicole 0412 169 035

## FIREWOOD

Action Firewood 0448 583 861

Oldfields Garden & Farm 5786 2171

Whittlesea Hardware 9716 2226

## FLORIST

Seed to Stem 0498 483 989

## FUNERAL HOMES

Halls Funeral Services 9438 5416

## GARDEN SERVICES & SUPPLIES

Johnny Slash - Slashing 0423 302 391

Morgan's Fuel Reduction 0419 895 464

Northern Mowers & Ag 03 9716 0579

Pheasant Creek Gas and Property Maintenance

0401 870 158

Spot On Drones 0468 852 140

## GAS SUPPLIES

Kinglake Gas Barry 5786 2197

Pheasant Creek Gas and Property Maintenance

0401 870 158

## GRAPHIC DESIGNER

Ann Friedel Publishing 0418 556 107

## HAIRDRESSER

L D Hair Studio 0404 092 927

## HARDWARE

Simply Timber & Roofing 03 5743 0000

## HEALTH & WELLBEING

Chinese Medicine – Dr Angela Palmer 5786 1889

Whittlesea Physiotherapy 9716 2250

## LANDSCAPING

Wheeler & Sons Construction 0421 435 766

## MEDICAL SERVICES

Whittlesea Medical Imaging 9716 0278

## METAL FABRICATIONS

Outer Edge Creations – Custom Fabrications

0409 575 846

## NURSERY / GARDEN

Alowyn Gardens 9730 2400

Oldfields Garden & Farm 5786 2171

## PAINTERS

John Kyme Painter & Decorator 0418 564 851

On Time Painting Australia 0402 771 175

## PEST CONTROL

Home Pest Services 0488 004 882

## PET SERVICES

Waggs Home Visits 0419 562 127

## PHARMACY

Kinglake Community Pharmacy 5786 1109

## PLANNING

Dindi & Yarra Planning 0413 188 248

## PLASTERING

PDL Plastering 0417 558 727 or 5786 5591

## PLUMBING & PUMP SERVICES/SALES

Irelands Plumbing 0447 710 631

Kinglake Plumbing & Drainage 0408 176 342

Licensed to Plumb 0405 263 224

Mountain Range Plumbing

Damien 0418 506 130

## SUPERMARKET

Kinglake FoodWorks 5763 6602

## TANK CLEANING

Accent On Tank Cleaning 0407 684 910

## TIMBER SUPPLIES

Simply Timber & Roofing 03 5743 0000

Whittlesea Hardware 9716 2226

## TREE SERVICES

Morgan's Tree Services Pty Ltd 0419 895 464

Star Tree Service 5783 3170

Unlimbited Tree Services 0419 506 739

## SECURITY DOORS / BLINDS

Doreen Security Doors & Binds 0431 867 359

## VALUATIONS

Yarra Valley Valuations 5961 9176

## VETERINARY SERVICES

Mountain Ranges Vet Clinic 5786 1777

## WATER BORES

Northwest Drilling 0409 362 289 or 9436 1982

## WATER SUPPLIERS

Mt Robertson Spring Water

0400 389 022 or 5786 1389

## WEDDING VENUE

Forest Weddings 5786 5230

## MURRINDINDI SHIRE COUNCIL

Customer Service &

General Enquiries (03) 5772 0333

Alexandra Library (03) 5772 0333

Yea Library (03) 5772 0333

Kinglake Library (03) 5772 0333

Mobile Library (03) 5772 0333

Operations Emergencies\* (03) 5772 0333

(eg collapsed bridge or trees over road)

Community Safety Emergencies\* (03) 5772 0333

(eg stock on roads or dog attacks)

**MOUNTAIN**

**MONTHLY**

**THE RANGES NEWS**

[www.mountainmonthly.com.au](http://www.mountainmonthly.com.au)



Find us on Facebook  
and Instagram

# COMMUNITY & EMERGENCY CONTACT NUMBERS

## EMERGENCY SERVICES

Kinglake Police	5786 1333
CFA	000
Police	000
Ambulance	000
SES	13 25 00
Nexus Primary Health	1300 77 33 52
Kinglake Ranges Health Centre	
Whittlesea Medical Clinic	
Whittlesea	9716 2207
Dental 24 hr Emergency (Bundoora)	1800 233 684
Mountain Ranges Vet Clinic	5786 1777
Help for Wildlife	0477 555 611
Wildlife Victoria	1300 094 535
Local Laws	0419 572 425
AusNet Services - Power Failure	13 17 99

## CRISIS NUMBERS

Berry Street	5770 2200
Kids Helpline	1800 551 800
Lifeline 24hr	13 11 14
Breastfeeding Helpline 24hrs	1800 686 268
24hr Maternal & Child Health line	13 22 29
Poisons Information	13 11 26

## ALCOHOL AND DRUG SERVICES

Nexus Primary Health	1300 773 352
----------------------	--------------

## MENTAL HEALTH SERVICES

Mental Health Advice Line	1300 280 737
Crisis Assessment & Treatment Team	1300 859 789
Aged Psychiatric Assessment and Treatment	1300 369 005
Adult Mental Health Mon-Fri BH	5735 0333
Afterhours/Weekends/24hrs	1300 369 005
Child And Adolescent Mental Health	
Monday to Friday 9-5	5735 0300
Afterhours	1300 369 005
Mental Illness Fellowship	5735 2000
Goulburn Valley Health Mental Health Services	
Seymour	1300 369 005
Epping	1300 874 243
Heidelberg	1300 859 862

## HOUSING SERVICES

Office of Housing – (Seymour DHS)	5793 6400
Rural Housing Network	5735 2000
Pathways – homeless or at risk of becoming	5735 2055
Homeless	
– Outreach Connections Program BH	0409 812 159
The Bridge – for people up to 25yrs	5799 1298
Nexus Primary Health	1300 773 352
Consumer Affairs – Tenancy advice	1300 558 181

## AGED AND DISABILITY SERVICES

Aged Care Assessment Service	5823 6000
Aged Psychiatric Assessment and Treatment	1300 369 005
National Dementia Helpline	1800 100 500
Carers' Respite and Information Service	1800 059 059
Community Interlink	1800 222 582
DHS – Disability Access and Response Team	1800 783 783
Regional Information and Advocacy Council	1800 221 944
Victorian Aids and Equipment Program	1300 747 937
Interchange	
– for children with disabilities	5735 4600
Nexus Primary Health	1300 773 352
– Rural Access Worker – Disability Case Management –	
Physiotherapy, OT, Speech, Dietetics, Continence Advice, Podiatry	
SCOPE	5799 0148
Deaf Access Victoria	1300 302 335
Vision Australia	5831 3555
Kinglake Carers' Support Group	5786 1232

## CHILD AND FAMILY SERVICES

DHS Child Protection	1800 650 227
After Hours	13 12 78
Foster Care – Berry Street Victoria	5799 0039
Family Day Care – Murrindindi Shire	1800 633 792
Permanent Care & Adoption – DHS	5832 1500
Specialist Children's Services – DHS	1800 783 783
Familycare	1800 663 107 or 5735 4600
Telephone Parenting Program	1800 880 660
Access & Support Worker	5774 2404

## FAMILY VIOLENCE

Nexus Primary Health	1300 773 352
Womens Domestic Violence Crisis Service	9322 3555 or 1800 015 188
Whittlesea Family Violence Unit, Mill Park Police	9407 3333

## COUNSELLING SERVICES

ATAPS (Access to allied and psychiatric services)	5734 8400
General Counselling	
– Yea Community Health	5736 0400
Familycare	1800 663 107
Nexus Primary Health	1300 773 352
– Women in Relationships, Financial Counselling, Gambling	
Counselling, trauma, family therapy, play therapy	
G.V Centre Against Sexual Assault	5831 2343
Men & Relationships Program	1800 663 107
Relationships Australia	1300 364 277
Catholic Care	5786 1016
Victims Support Agency	1300 362 739
Victims of Crime Helpline	1800 819 817
ACGB Australian Centre for Grief and Bereavement	9265 2111

## HEALTH SERVICES

Hurstbridge Medical Centre	9718 2611
FamilyCare	5735 6400
Yea Medical Centre	5736 0444
Yea & District Memorial Hospital	5736 0400
– Acute care, District nursing, Ultrasound, Pathology, Physiotherapy, Visiting specialists	
Nexus Primary Health (Kinglake Ranges Health Centre)	1300 77 33 52
– Dietitian, OT, Diabetes educator, Asthma educator, Counsellor, Support Worker, general practitioner, practice nurse	
Maternal and Child Health	5786 1337
Lower Hume Palliative Care	5735 8070

## COMMUNITY SUPPORT RESOURCES

Kinglake Neighbourhood House	5786 1301
Kinglake Ranges Men's Shed	0402 523 488
5 Oldfield Road, Kinglake West 5757	
email: kinglake-shed@outlook.com	
KRBN	5786 1976

## SCHOOLS

Kinglake PS	5786 1284
Middle Kinglake PS	5786 1295
Kinglake West PS	5786 5262
Flowerdale PS	5780 1264
Toolangi PS	5962 9255
Strathewen PS	9714 8278
Yea High	5797 2207
Whittlesea SC	9719 1200
Diamond Valley	9438 1411

## KINDERGARTENS/PLAYGROUPS

Kinglake Ranges Childrens Centre	5786 1352
Kinglake Playgroup	5786 1301
Flowerdale Kinder	5780 2816

## PUBLIC PLACES

Bollygum Park	5786 1426
Community Centre Bookings	5786 1522
Kinglake Library	5786 1522
Lions Tool Library	0414 555 544
Sports Stadium Bookings	5786 1522
Kinglake West Mechanics Institute	0435 414 110
PO Box 108, Pheasant Creek	3757
Football Clubrooms	5786 1580
National Park	13 19 63 www.parks.vic.gov.au
Flowerdale Community Hall	5780 2027
Flowerdale Community House	5780 2664

## PATIENT TRANSPORT

Red Cross Patient Transport Service	0419 872 230
Lower Hume Community Transport Scheme	5799 2965

## JUSTICES OF THE PEACE

K Stewart (Kinglake)	0419 347 581
----------------------	--------------

## RESOURCE RECOVERY CENTRE

TRANSFER STATION (KINGLAKE)	
CHARGES FOR MURRINDINDI RATEPAYERS	
We recommend you check the website	
<a href="http://www.murrindindindi.vic.gov.au">www.murrindindindi.vic.gov.au</a> for current charges	

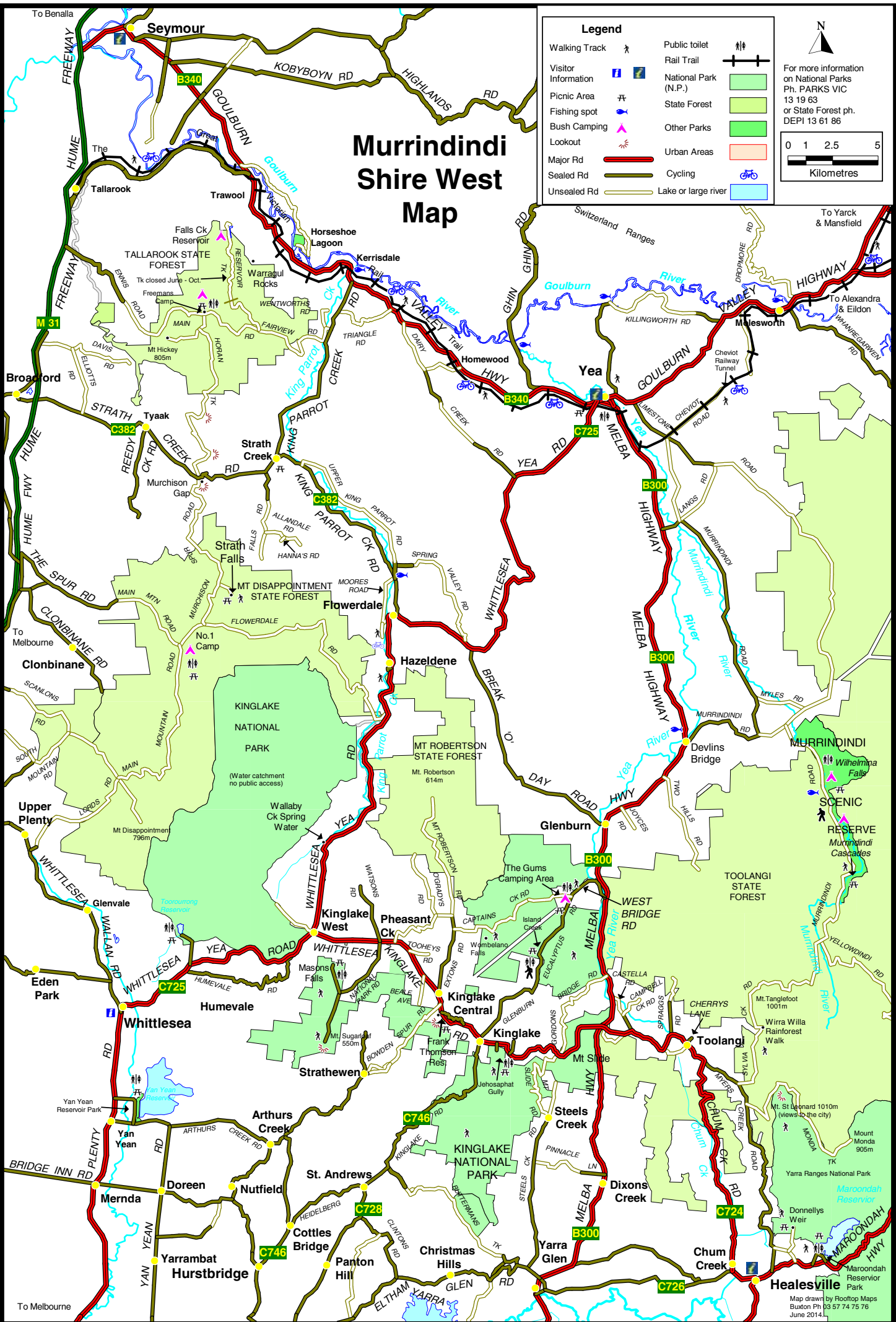
# Murrindindi Shire West Map

**Legend**

Walking Track	Public toilet	
Visitor Information	Rail Trail	
Picnic Area	National Park (N.P.)	
Fishing spot	State Forest	
Bush Camping	Other Parks	
Lookout	Urban Areas	
Major Rd	Cycling	
Sealed Rd	Lake or large river	
Unsealed Rd		

For more information on National Parks Ph. PARKS VIC 13 19 63 or State Forest ph. DEPI 13 61 86

0 1 2.5 5  
Kilometres





**Murrindindi**  
Shire Council



# JOIN OUR **BIG** **CONVERSATION**

Attention Kinglake Ranges! So far, you've shared your thoughts on our progress with the 2021-2025 Council Plan and highlighted the projects and activities that matter most to you. Now, let's take a deeper dive into your aspirations and BIG ideas for our community's future.

Enjoy a light meal while you chat, connect, and share ideas with other community members, Councillors and Council officers. Your feedback will help shape our new Council Plan.



Tuesday 18 February  
6.00 - 8.00 pm



Kinglake Community  
Centre

Register at [murrindindi.vic.gov.au/councilplan](https://murrindindi.vic.gov.au/councilplan)





# Integrity

Real Estate Yarra Valley



11 Koetong Street, Kinglake 3.2 Acres 4 2



\$1.28 - \$1.33 PRICED TO SELL  
William Verhagen 0437 371 969



9 Jouvelet Street, Kinglake West 1 Acre 4 2



\$1,050,000 - \$1,080,000  
William Verhagen 0437 371 969



40 George Street, Kinglake 2032sqm 4 2



\$750,000 - \$800,000  
William Verhagen 0437 371 969



1 Elm Grove, Kinglake 1968sqm 2 1



\$500,000 - \$550,000  
William Verhagen 0437 371 969

integrity\_real\_estate

info@integrityrealestate.com.au

Shop 1/2 Kinglake-Glenburn Road, Kinglake



# Integrity

Local experts you can trust